



VOTER TURNOUT SUMMARY REPORT 2009 GENERAL ELECTION

Monroe County Board of Elections
39 West Main Street, Rochester, New York 14614

December 16, 2009

Peter M. Quinn
Commissioner of Elections

Thomas F. Ferrarese
Commissioner of Elections

CONTENTS DESCRIPTION

General Summary	Page 1
Democratic Summary	Page 12
Republican Summary	Page 18
Independence Summary	Page 24
Conservative Summary	Page 30
Working Families Summary	Page 36
Blanks Summary	Page 42
Historical Data.....	Page 48

GENERAL SUMMARY

2009 GENERAL ELECTION
VOTER TURNOUT BY GENDER

LT/LD SUMMARY

LEGISLATIVE DISTRICT OR TOWN CITY	TOTAL VOTERS			MALES			FEMALES		
	VOTED	REGISTERED	TURNOUT	VOTED	REGISTERED	TURNOUT	VOTED	REGISTERED	TURNOUT
Leg. Dist. 06	825	2,994	27.56 %	371	1,287	28.83 %	454	1,707	26.60 %
Leg. Dist. 07	572	1,597	35.82 %	267	720	37.08 %	305	877	34.78 %
Leg. Dist. 21	2,562	13,214	19.39 %	1,188	5,715	20.79 %	1,374	7,499	18.32 %
Leg. Dist. 22	1,018	9,511	10.70 %	407	3,918	10.39 %	611	5,593	10.92 %
Leg. Dist. 23	3,342	12,056	27.72 %	1,731	5,862	29.53 %	1,611	6,194	26.01 %
Leg. Dist. 24	2,016	7,078	28.48 %	966	3,242	29.80 %	1,050	3,836	27.37 %
Leg. Dist. 25	1,842	10,232	18.00 %	837	4,589	18.24 %	1,005	5,643	17.81 %
Leg. Dist. 26	1,272	7,029	18.10 %	602	3,014	19.97 %	670	4,015	16.69 %
Leg. Dist. 27	2,607	13,745	18.97 %	1,098	5,772	19.02 %	1,509	7,973	18.93 %
Leg. Dist. 28	1,383	9,645	14.34 %	679	4,059	16.73 %	704	5,586	12.60 %
Leg. Dist. 29	1,825	11,503	15.87 %	802	4,754	16.87 %	1,023	6,749	15.16 %
TOTAL:	19,264	98,604	19.54 %	8,948	42,932	20.84 %	10,316	55,672	18.53 %
TOWNS									
Brighton	6,921	21,675	31.93 %	3,271	9,695	33.74 %	3,650	11,980	30.47 %
Chili	6,074	18,695	32.49 %	3,102	8,794	35.27 %	2,972	9,901	30.02 %
Clarkson	1,476	3,823	38.61 %	770	1,832	42.03 %	706	1,991	35.46 %
East Rochester	1,383	3,769	36.69 %	656	1,713	38.30 %	727	2,056	35.36 %
Gates	6,156	17,861	34.47 %	2,932	8,047	36.44 %	3,224	9,814	32.85 %
Greece	21,881	61,452	35.61 %	10,796	27,906	38.69 %	11,085	33,546	33.04 %
Hamlin	1,850	5,232	35.36 %	991	2,518	39.36 %	859	2,714	31.65 %
Henrietta	6,677	21,318	31.32 %	3,374	10,024	33.66 %	3,303	11,294	29.25 %
Irondequoit	12,595	34,583	36.42 %	5,985	15,299	39.12 %	6,610	19,284	34.28 %
Mendon	2,474	6,309	39.21 %	1,265	3,031	41.74 %	1,209	3,278	36.88 %
Ogden	2,754	12,340	22.32 %	1,460	5,795	25.19 %	1,294	6,545	19.77 %
Parma	3,873	10,146	38.17 %	1,984	4,837	41.02 %	1,889	5,309	35.58 %
Penfield	8,930	24,618	36.27 %	4,452	11,423	38.97 %	4,478	13,195	33.94 %
Perinton	10,147	32,615	31.11 %	5,092	15,146	33.62 %	5,055	17,469	28.94 %
Pittsford	6,272	19,318	32.47 %	3,141	8,950	35.09 %	3,131	10,368	30.20 %
Riga	1,640	3,807	43.08 %	841	1,811	46.44 %	799	1,996	40.03 %
Rush	1,027	2,534	40.53 %	519	1,238	41.92 %	508	1,296	39.20 %
Sweden	2,200	6,352	34.63 %	1,085	2,949	36.79 %	1,115	3,403	32.77 %
Webster	8,694	27,958	31.10 %	4,420	12,909	34.24 %	4,274	15,049	28.40 %
Wheatland	1,091	3,206	34.03 %	543	1,495	36.32 %	548	1,711	32.03 %
TOTAL:	114,115	337,611	33.80 %	56,679	155,412	36.47 %	57,436	182,199	31.52 %
GRAND TOTAL:	133,379	436,215	30.58 %	65,627	198,344	33.09 %	67,752	237,871	28.48 %

2009 GENERAL ELECTION
VOTER TURNOUT BY PARTY

LT/LD SUMMARY

Part 1 of 2

LEGISLATIVE DISTRICT OR TOWN	DEMOCRAT			REPUBLICAN			INDEPENDENCE		
	VOTED	REGISTERED	TURNOUT	VOTED	REGISTERED	TURNOUT	VOTED	REGISTERED	TURNOUT
CITY									
Leg. Dist. 06	306	1,195	25.61 %	297	839	35.40 %	22	117	18.80 %
Leg. Dist. 07	230	661	34.80 %	212	470	45.11 %	20	72	27.78 %
Leg. Dist. 21	1,598	8,316	19.22 %	529	1,722	30.72 %	56	503	11.13 %
Leg. Dist. 22	876	7,267	12.05 %	84	571	14.71 %	6	157	3.82 %
Leg. Dist. 23	1,907	6,288	30.33 %	754	2,196	34.34 %	78	581	13.43 %
Leg. Dist. 24	1,248	3,917	31.86 %	369	1,166	31.65 %	39	285	13.68 %
Leg. Dist. 25	1,432	7,469	19.17 %	193	810	23.83 %	27	246	10.98 %
Leg. Dist. 26	615	3,911	15.72 %	407	1,304	31.21 %	34	263	12.93 %
Leg. Dist. 27	1,991	10,330	19.27 %	327	1,100	29.73 %	30	331	9.06 %
Leg. Dist. 28	823	6,014	13.68 %	325	1,274	25.51 %	28	320	8.75 %
Leg. Dist. 29	1,243	7,699	16.14 %	360	1,409	25.55 %	31	270	11.48 %
TOTAL:	12,269	63,067	19.45 %	3,857	12,861	29.99 %	371	3,145	11.80 %
TOWNS									
Brighton	3,193	9,718	32.86 %	2,306	5,869	39.29 %	120	777	15.44 %
Chili	1,670	5,897	28.32 %	3,003	7,110	42.24 %	122	692	17.63 %
Clarkson	321	997	32.20 %	820	1,653	49.61 %	44	183	24.04 %
East Rochester	419	1,264	33.15 %	588	1,238	47.50 %	54	175	30.86 %
Gates	2,038	6,656	30.62 %	2,787	5,932	46.98 %	142	672	21.13 %
Greece	6,060	19,092	31.74 %	10,407	23,084	45.08 %	535	2,491	21.48 %
Hamlin	362	1,259	28.75 %	1,128	2,365	47.70 %	60	257	23.35 %
Henrietta	2,168	7,655	28.32 %	3,042	7,274	41.82 %	171	865	19.77 %
Irondequoit	4,345	13,096	33.18 %	4,980	10,833	45.97 %	364	1,405	25.91 %
Mendon	617	1,760	35.06 %	1,269	2,744	46.25 %	71	269	26.39 %
Ogden	565	3,217	17.56 %	1,564	5,100	30.67 %	60	542	11.07 %
Parma	782	2,506	31.21 %	2,053	4,172	49.21 %	101	425	23.76 %
Penfield	2,497	7,488	33.35 %	4,145	9,380	44.19 %	226	1,007	22.44 %
Perinton	2,893	9,675	29.90 %	4,990	13,024	38.31 %	188	1,250	15.04 %
Pittsford	1,848	5,994	30.83 %	3,153	7,835	40.24 %	150	659	22.76 %
Riga	343	857	40.02 %	923	1,762	52.38 %	40	173	23.12 %
Rush	279	691	40.38 %	518	1,075	48.19 %	16	86	18.60 %
Sweden	649	1,955	33.20 %	1,039	2,443	42.53 %	62	300	20.67 %
Webster	2,420	8,480	28.54 %	3,978	10,311	38.58 %	254	1,251	20.30 %
Wheatland	296	943	31.39 %	564	1,284	43.93 %	22	137	16.06 %
TOTAL:	33,765	109,200	30.92 %	53,257	124,488	42.78 %	2,802	13,616	20.58 %
GRAND TOTAL:	46,034	172,267	26.72 %	57,114	137,349	41.58 %	3,173	16,761	18.93 %

2009 GENERAL ELECTION
VOTER TURNOUT BY PARTY

LT/LD SUMMARY

Part 2 of 2

LEGISLATIVE DISTRICT OR TOWN	CONSERVATIVE			WORKING FAMILIES			BLANK		
	VOTED	REGISTERED	TURNOUT	VOTED	REGISTERED	TURNOUT	VOTED	REGISTERED	TURNOUT
CITY									
Leg. Dist. 06	35	90	38.89 %	1	9	11.11 %	164	744	22.04 %
Leg. Dist. 07	14	26	53.85 %	1	4	25.00 %	95	364	26.10 %
Leg. Dist. 21	35	94	37.23 %	4	56	7.14 %	340	2,523	13.48 %
Leg. Dist. 22	8	44	18.18 %	1	83	1.20 %	43	1,389	3.10 %
Leg. Dist. 23	36	88	40.91 %	5	32	15.63 %	562	2,871	19.58 %
Leg. Dist. 24	17	55	30.91 %	6	28	21.43 %	337	1,627	20.71 %
Leg. Dist. 25	9	48	18.75 %	2	38	5.26 %	179	1,621	11.04 %
Leg. Dist. 26	32	94	34.04 %	3	45	6.67 %	181	1,412	12.82 %
Leg. Dist. 27	19	70	27.14 %	5	64	7.81 %	235	1,850	12.70 %
Leg. Dist. 28	43	120	35.83 %	2	79	2.53 %	162	1,838	8.81 %
Leg. Dist. 29	26	96	27.08 %	3	75	4.00 %	162	1,954	8.29 %
TOTAL:	274	825	33.21 %	33	513	6.43 %	2,460	18,193	13.52 %
TOWNS									
Brighton	73	200	36.50 %	1	23	4.35 %	1,228	5,088	24.14 %
Chili	179	427	41.92 %	10	36	27.78 %	1,090	4,533	24.05 %
Clarkson	52	130	40.00 %	2	12	16.67 %	237	848	27.95 %
East Rochester	36	90	40.00 %	1	17	5.88 %	285	985	28.93 %
Gates	178	390	45.64 %	11	64	17.19 %	1,000	4,147	24.11 %
Greece	674	1,513	44.55 %	30	162	18.52 %	4,175	15,110	27.63 %
Hamlin	48	128	37.50 %	2	12	16.67 %	250	1,211	20.64 %
Henrietta	168	439	38.27 %	5	37	13.51 %	1,123	5,048	22.25 %
Irondequoit	318	655	48.55 %	11	69	15.94 %	2,577	8,525	30.23 %
Mendon	51	104	49.04 %	1	4	25.00 %	465	1,428	32.56 %
Ogden	100	349	28.65 %	3	32	9.38 %	462	3,100	14.90 %
Parma	115	259	44.40 %	12	44	27.27 %	810	2,740	29.56 %
Penfield	170	395	43.04 %	6	30	20.00 %	1,886	6,318	29.85 %
Perinton	168	437	38.44 %	4	44	9.09 %	1,904	8,185	23.26 %
Pittsford	87	199	43.72 %	2	15	13.33 %	1,032	4,616	22.36 %
Riga	46	84	54.76 %	3	9	33.33 %	285	922	30.91 %
Rush	25	46	54.35 %	0	7	0.00 %	189	629	30.05 %
Sweden	44	124	35.48 %	1	22	4.55 %	405	1,508	26.86 %
Webster	196	526	37.26 %	7	47	14.89 %	1,839	7,343	25.04 %
Wheatland	33	74	44.59 %	1	5	20.00 %	175	763	22.94 %
TOTAL:	2,761	6,569	42.03 %	113	691	16.35 %	21,417	83,047	25.79 %
GRAND TOTAL:	3,035	7,394	41.05 %	146	1,204	12.13 %	23,877	101,240	23.58 %

2009 GENERAL ELECTION
VOTER TURNOUT BY AGE

LT/LD SUMMARY
Part 1 of 2

LEGISLATIVE DISTRICT OR TOWN	NDOB			18-24			25-34			35-44		
	VOTED	REGISTERED	TURNOUT	VOTED	REGISTERED	TURNOUT	VOTED	REGISTERED	TURNOUT	VOTED	REGISTERED	TURNOUT
Leg. Dist. 06	26	47	55.32 %	9	208	4.33 %	62	560	11.07 %	100	470	21.28 %
Leg. Dist. 07	7	27	25.93 %	8	112	7.14 %	16	193	8.29 %	31	205	15.12 %
Leg. Dist. 21	81	197	41.12 %	50	1,433	3.49 %	249	2,893	8.61 %	314	2,564	12.25 %
Leg. Dist. 22	16	59	27.12 %	23	1,321	1.74 %	48	1,889	2.54 %	113	1,817	6.22 %
Leg. Dist. 23	91	157	57.96 %	63	1,062	5.93 %	375	3,359	11.16 %	420	2,068	20.31 %
Leg. Dist. 24	42	96	43.75 %	40	552	7.25 %	219	1,704	12.85 %	268	1,174	22.83 %
Leg. Dist. 25	38	97	39.18 %	44	1,409	3.12 %	128	2,020	6.34 %	179	1,740	10.29 %
Leg. Dist. 26	34	83	40.96 %	30	809	3.71 %	86	1,545	5.57 %	167	1,339	12.47 %
Leg. Dist. 27	53	125	42.40 %	66	1,742	3.79 %	174	2,582	6.74 %	304	2,530	12.02 %
Leg. Dist. 28	34	97	35.05 %	29	1,227	2.36 %	85	1,908	4.45 %	141	1,760	8.01 %
Leg. Dist. 29	55	150	36.67 %	30	1,417	2.12 %	101	2,130	4.74 %	181	1,994	9.08 %
TOTAL:	477	1,135	42.03 %	392	11,292	3.47 %	1,543	20,783	7.42 %	2,218	17,661	12.56 %
Brighton	192	379	50.66 %	127	1,762	7.21 %	317	3,076	10.31 %	621	3,113	19.95 %
Chili	195	320	60.94 %	100	1,675	5.97 %	290	2,808	10.33 %	647	3,118	20.75 %
Clarkson	3	7	42.86 %	40	323	12.38 %	65	471	13.80 %	239	806	29.65 %
East Rochester	71	121	58.68 %	48	354	13.56 %	117	648	18.06 %	180	648	27.78 %
Gates	70	141	49.65 %	118	1,376	8.58 %	258	2,614	9.87 %	559	2,813	19.87 %
Greece	587	1,077	54.50 %	490	5,489	8.93 %	914	8,601	10.63 %	2,069	9,341	22.15 %
Hamlin	13	26	50.00 %	55	512	10.74 %	87	676	12.87 %	205	896	22.88 %
Henrietta	41	92	44.57 %	130	2,089	6.22 %	386	3,176	12.15 %	753	3,645	20.66 %
Irondequoit	391	733	53.34 %	243	2,811	8.64 %	624	4,890	12.76 %	1,294	5,305	24.39 %
Mendon	11	20	55.00 %	42	693	6.06 %	64	568	11.27 %	288	1,070	26.92 %
Ogden	41	126	32.54 %	58	1,123	5.16 %	134	1,607	8.34 %	273	2,094	13.04 %
Parma	25	49	51.02 %	90	1,072	8.40 %	193	1,253	15.40 %	430	1,650	26.06 %
Penfield	185	360	51.39 %	164	2,008	8.17 %	290	2,728	10.63 %	1,068	3,987	26.79 %
Perinton	47	127	37.01 %	141	2,948	4.78 %	344	3,537	9.73 %	1,013	5,389	18.80 %
Pittsford	75	156	48.08 %	79	1,664	4.75 %	142	1,631	8.71 %	633	2,965	21.35 %
Riga	7	18	38.89 %	54	355	15.21 %	73	464	15.73 %	215	620	34.68 %
Rush	46	73	63.01 %	15	214	7.01 %	33	249	13.25 %	88	328	26.83 %
Sweden	30	47	63.83 %	62	802	7.73 %	109	870	12.53 %	239	932	25.64 %
Webster	204	375	54.40 %	140	2,152	6.51 %	309	3,153	9.80 %	864	4,897	17.64 %
Wheatland	13	20	65.00 %	21	328	6.40 %	58	455	12.75 %	118	448	26.34 %
TOTAL:	2,247	4,267	52.66 %	2,217	29,750	7.45 %	4,807	43,475	11.06 %	11,796	54,065	21.82 %
GRAND TOTAL:	2,724	5,402	50.43 %	2,609	41,042	6.36 %	6,350	64,258	9.88 %	14,014	71,726	19.54 %

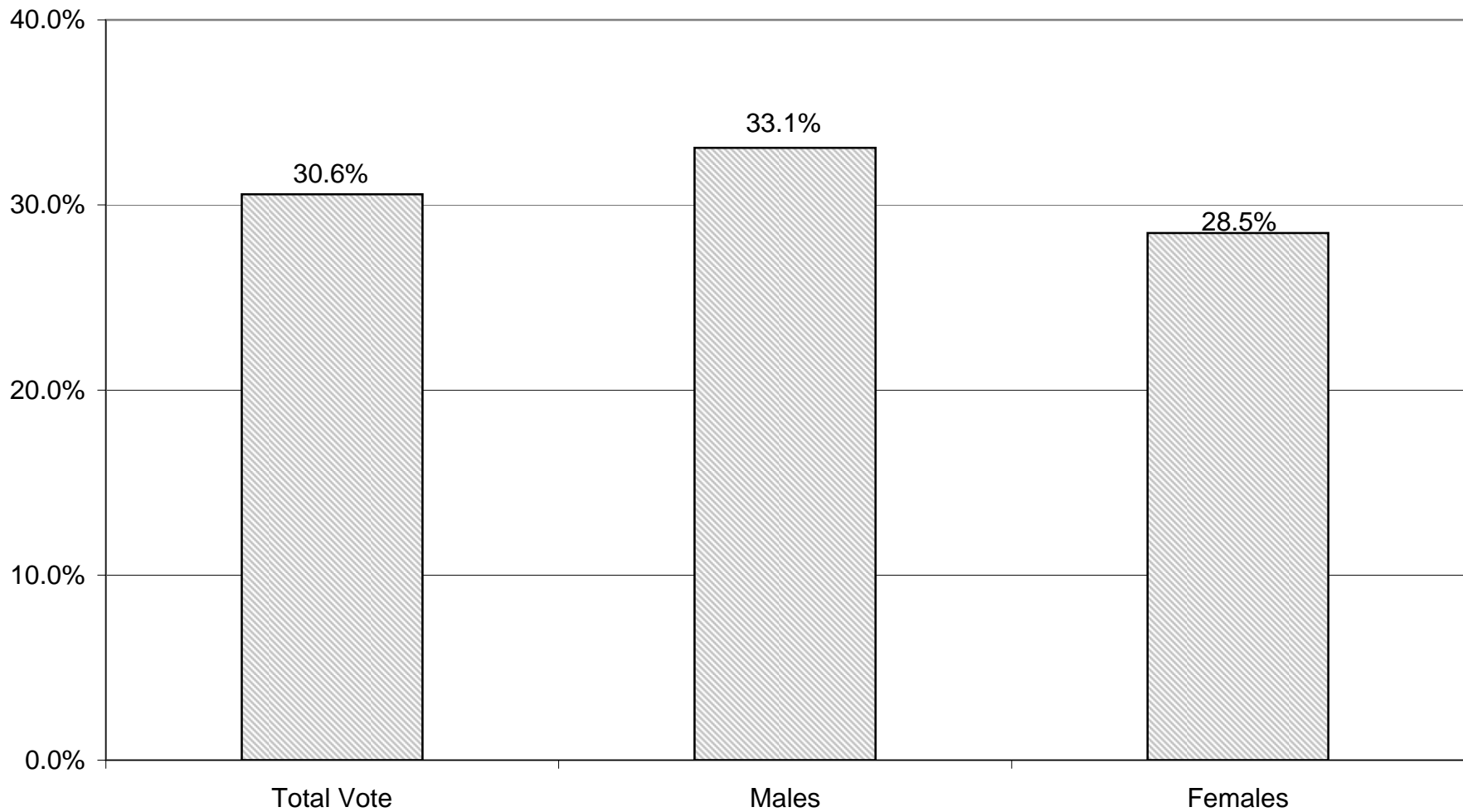
2009 GENERAL ELECTION
VOTER TURNOUT BY AGE

LT/LD SUMMARY
Part 2 of 2

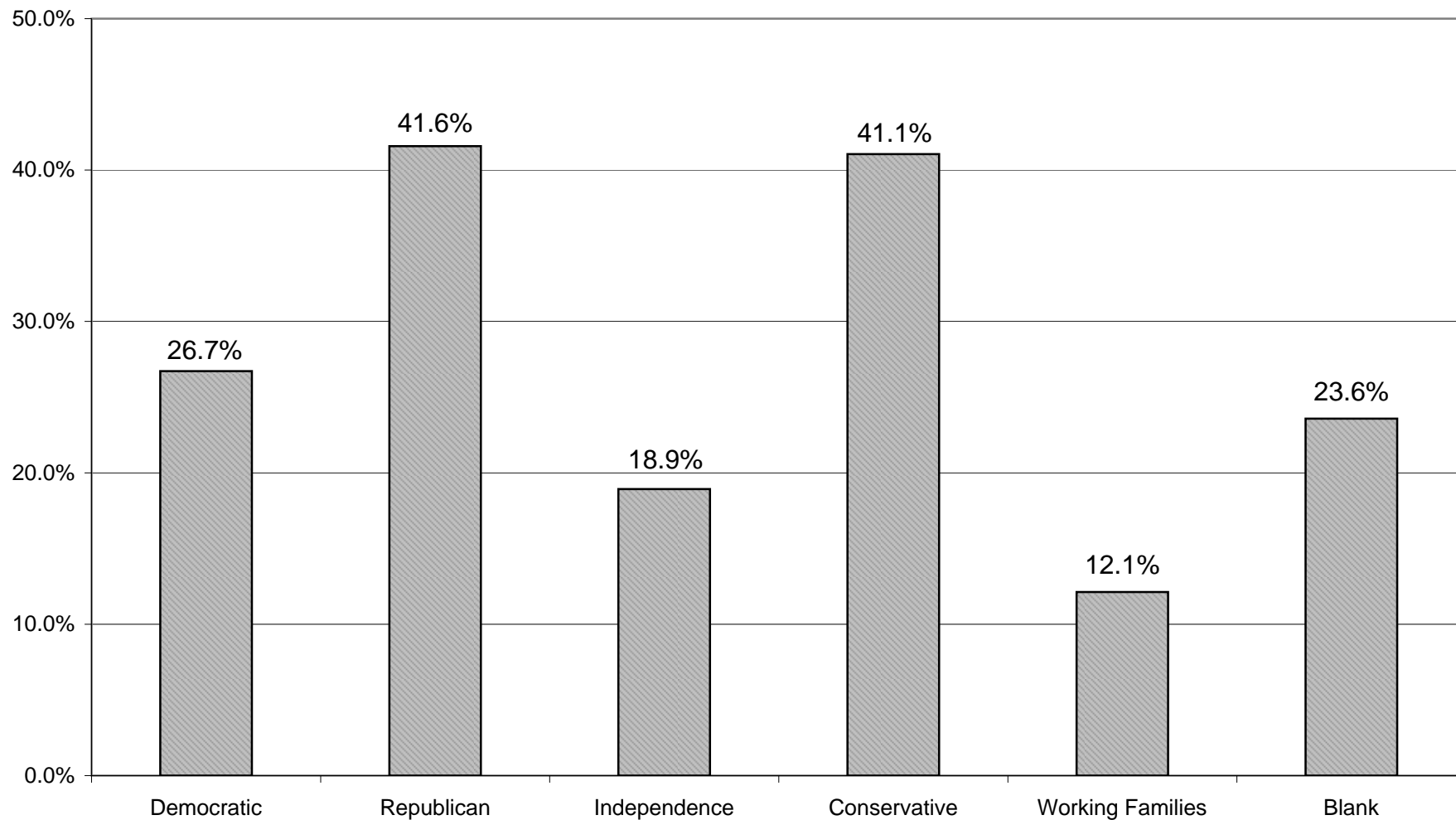
LEGISLATIVE
DISTRICT

OR TOWN	45-54			55-64			65+		
	VOTED	REGISTERED	TURNOUT	VOTED	REGISTERED	TURNOUT	VOTED	REGISTERED	TURNOUT
Leg. Dist. 06	175	621	28.18 %	217	553	39.24 %	236	535	44.11 %
Leg. Dist. 07	115	305	37.70 %	190	382	49.74 %	205	373	54.96 %
Leg. Dist. 21	523	2,454	21.31 %	652	1,982	32.90 %	693	1,691	40.98 %
Leg. Dist. 22	252	1,886	13.36 %	277	1,378	20.10 %	289	1,161	24.89 %
Leg. Dist. 23	679	1,983	34.24 %	871	1,918	45.41 %	843	1,509	55.86 %
Leg. Dist. 24	435	1,253	34.72 %	534	1,226	43.56 %	478	1,073	44.55 %
Leg. Dist. 25	376	1,892	19.87 %	470	1,503	31.27 %	607	1,571	38.64 %
Leg. Dist. 26	317	1,446	21.92 %	296	1,008	29.37 %	342	799	42.80 %
Leg. Dist. 27	560	2,755	20.33 %	730	2,135	34.19 %	720	1,876	38.38 %
Leg. Dist. 28	326	2,017	16.16 %	378	1,457	25.94 %	390	1,179	33.08 %
Leg. Dist. 29	381	2,247	16.96 %	492	1,852	26.57 %	585	1,713	34.15 %
TOTAL:	4,139	18,859	21.95 %	5,107	15,394	33.18 %	5,388	13,480	39.97 %
Brighton	1,220	4,107	29.71 %	1,717	3,998	42.95 %	2,727	5,240	52.04 %
Chili	1,304	3,946	33.05 %	1,500	3,270	45.87 %	2,038	3,558	57.28 %
Clarkson	375	898	41.76 %	344	639	53.83 %	410	679	60.38 %
East Rochester	313	780	40.13 %	297	608	48.85 %	357	610	58.52 %
Gates	1,191	3,456	34.46 %	1,383	2,959	46.74 %	2,577	4,502	57.24 %
Greece	4,739	12,628	37.53 %	5,563	11,228	49.55 %	7,519	13,088	57.45 %
Hamlin	484	1,296	37.35 %	527	1,022	51.57 %	479	804	59.58 %
Henrietta	1,435	4,373	32.82 %	1,640	3,673	44.65 %	2,292	4,270	53.68 %
Irondequoit	2,603	6,684	38.94 %	3,125	6,245	50.04 %	4,315	7,915	54.52 %
Mendon	755	1,700	44.41 %	657	1,208	54.39 %	657	1,050	62.57 %
Ogden	666	3,037	21.93 %	718	2,292	31.33 %	864	2,061	41.92 %
Parma	1,012	2,409	42.01 %	973	1,792	54.30 %	1,150	1,921	59.86 %
Penfield	2,088	5,572	37.47 %	2,276	4,675	48.68 %	2,859	5,288	54.07 %
Perinton	2,080	7,164	29.03 %	2,623	6,351	41.30 %	3,899	7,099	54.92 %
Pittsford	1,334	4,394	30.36 %	1,479	3,690	40.08 %	2,530	4,818	52.51 %
Riga	438	972	45.06 %	410	725	56.55 %	443	653	67.84 %
Rush	263	637	41.29 %	270	533	50.66 %	312	500	62.40 %
Sweden	488	1,343	36.34 %	631	1,231	51.26 %	641	1,127	56.88 %
Webster	1,983	6,335	31.30 %	2,133	5,039	42.33 %	3,061	6,007	50.96 %
Wheatland	245	716	34.22 %	282	595	47.39 %	354	644	54.97 %
TOTAL:	25,016	72,447	34.53 %	28,548	61,773	46.21 %	39,484	71,834	54.97 %
GRAND TOTAL:	29,155	91,306	31.93 %	33,655	77,167	43.61 %	44,872	85,314	52.60 %

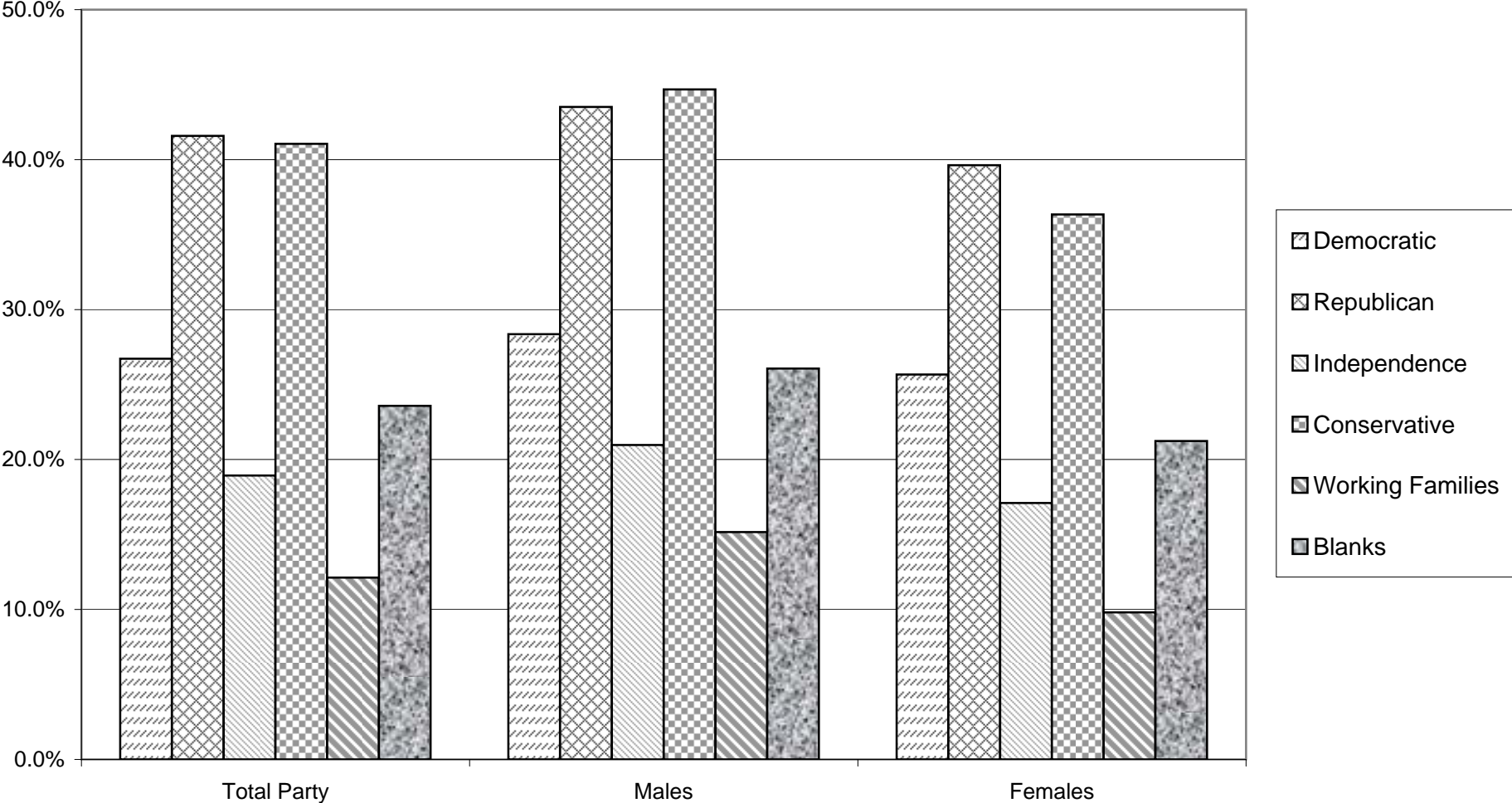
VOTER TURNOUT - TOTAL AND BY GENDER 2009 GENERAL ELECTION



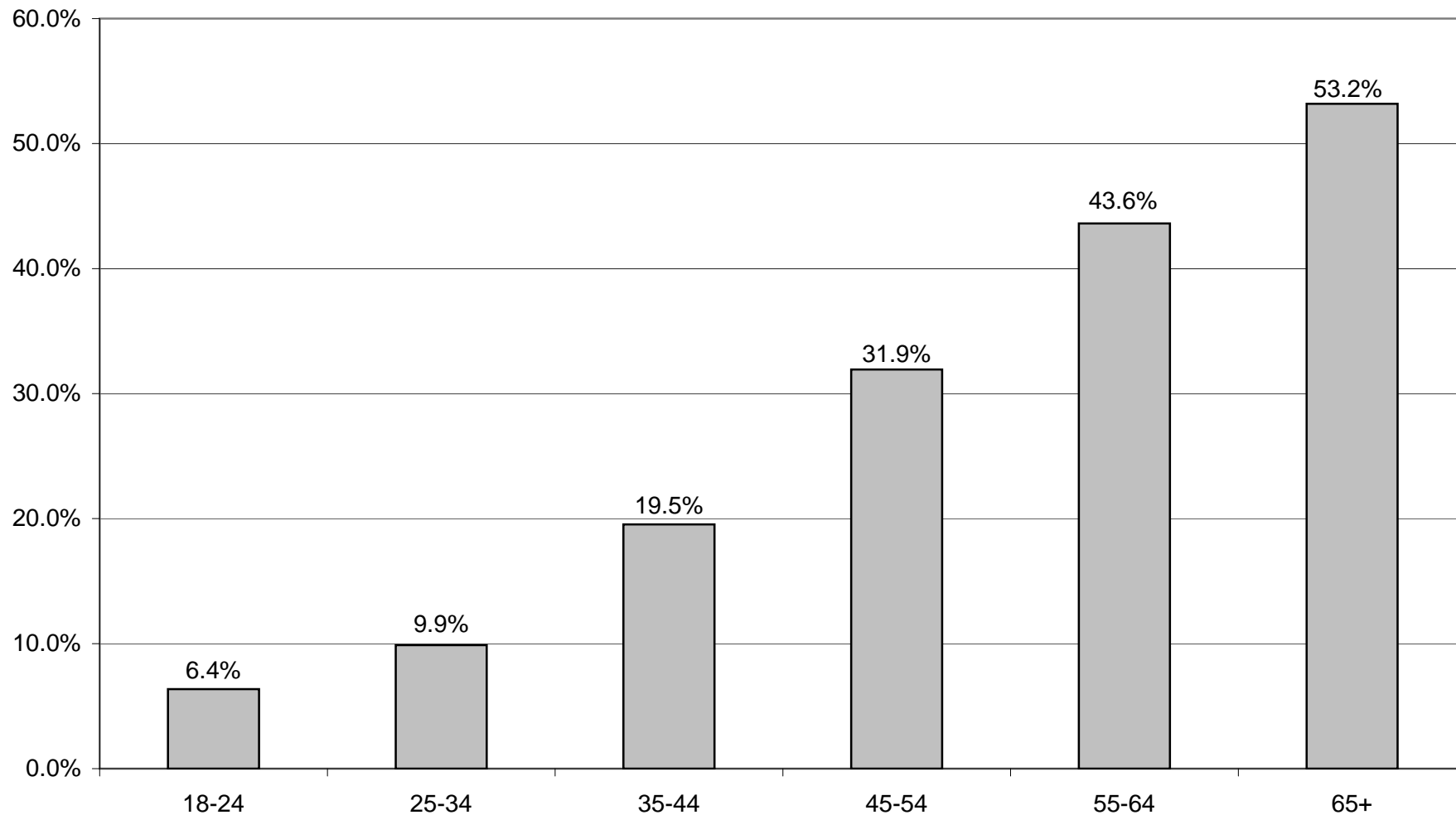
VOTER TURNOUT BY PARTY 2009 GENERAL ELECTION



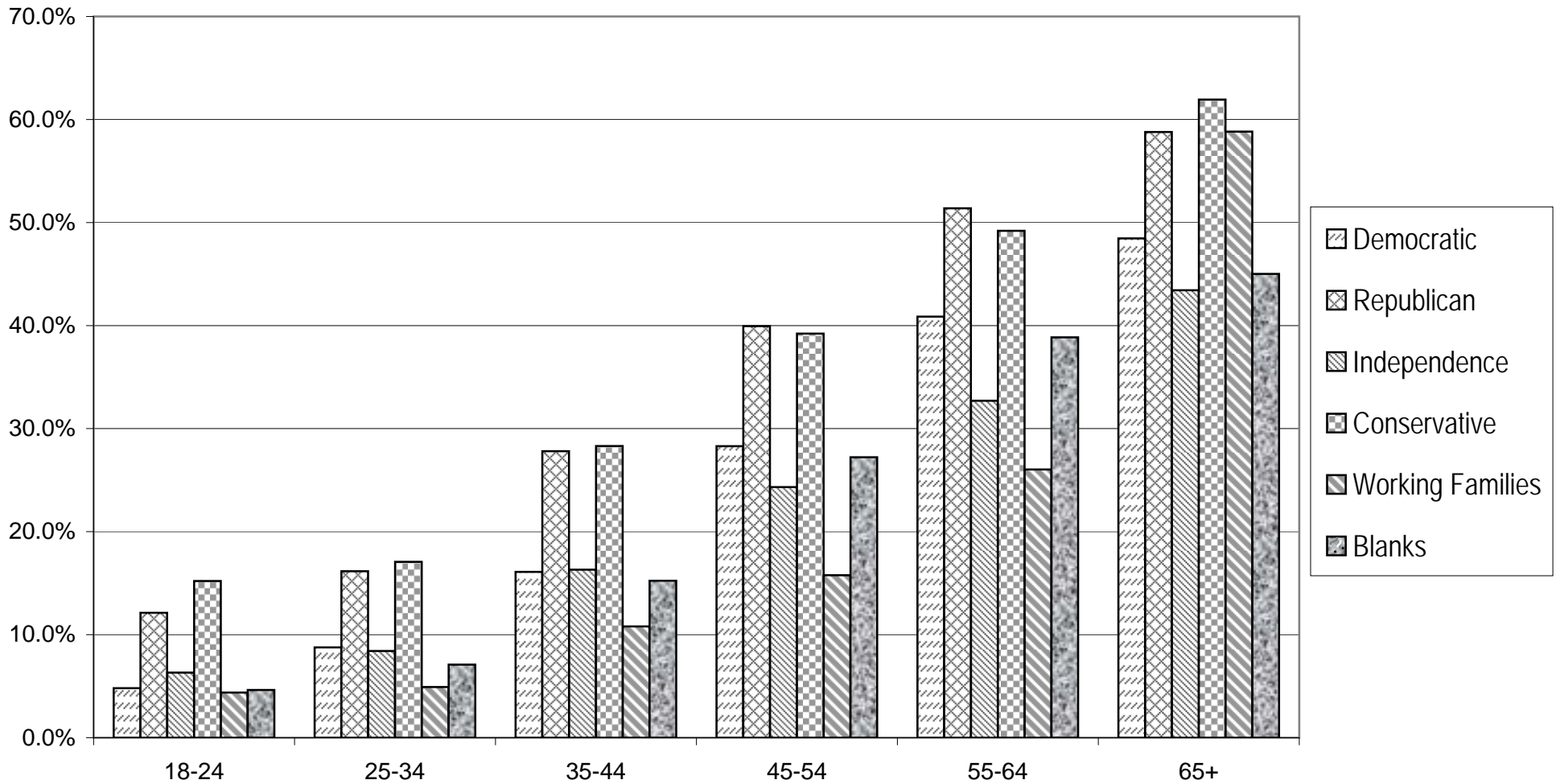
COMPARISON OF TOTAL AND GENDER TURNOUT 2009 GENERAL ELECTION



VOTER TURNOUT BY AGE GROUP 2009 GENERAL ELECTION



COMPARISON OF TURNOUT BY AGE GROUP 2009 GENERAL ELECTION



DEMOCRATIC SUMMARY

2009 GENERAL ELECTION
DEMOCRATIC TURNOUT BY GENDER

LT/LD SUMMARY

LEGISLATIVE DISTRICT OR TOWN CITY	TOTAL VOTERS			MALES			FEMALES		
	VOTED	REGISTERED	TURNOUT	VOTED	REGISTERED	TURNOUT	VOTED	REGISTERED	TURNOUT
Leg. Dist. 06	306	1,195	25.61 %	119	433	27.48 %	187	762	24.54 %
Leg. Dist. 07	230	661	34.80 %	89	255	34.90 %	141	406	34.73 %
Leg. Dist. 21	1,598	8,316	19.22 %	672	3,306	20.33 %	926	5,010	18.48 %
Leg. Dist. 22	876	7,267	12.05 %	329	2,918	11.27 %	547	4,349	12.58 %
Leg. Dist. 23	1,907	6,288	30.33 %	892	2,738	32.58 %	1,015	3,550	28.59 %
Leg. Dist. 24	1,248	3,917	31.86 %	545	1,619	33.66 %	703	2,298	30.59 %
Leg. Dist. 25	1,432	7,469	19.17 %	598	3,115	19.20 %	834	4,354	19.15 %
Leg. Dist. 26	615	3,911	15.72 %	249	1,503	16.57 %	366	2,408	15.20 %
Leg. Dist. 27	1,991	10,330	19.27 %	792	4,097	19.33 %	1,199	6,233	19.24 %
Leg. Dist. 28	823	6,014	13.68 %	363	2,358	15.39 %	460	3,656	12.58 %
Leg. Dist. 29	1,243	7,699	16.14 %	502	2,971	16.90 %	741	4,728	15.67 %
TOTAL:	12,269	63,067	19.45 %	5,150	25,313	20.35 %	7,119	37,754	18.86 %
TOWNS									
Brighton	3,193	9,718	32.86 %	1,305	3,801	34.33 %	1,888	5,917	31.91 %
Chili	1,670	5,897	28.32 %	727	2,412	30.14 %	943	3,485	27.06 %
Clarkson	321	997	32.20 %	138	391	35.29 %	183	606	30.20 %
East Rochester	419	1,264	33.15 %	160	495	32.32 %	259	769	33.68 %
Gates	2,038	6,656	30.62 %	818	2,587	31.62 %	1,220	4,069	29.98 %
Greece	6,060	19,092	31.74 %	2,527	7,254	34.84 %	3,533	11,838	29.84 %
Hamlin	362	1,259	28.75 %	160	495	32.32 %	202	764	26.44 %
Henrietta	2,168	7,655	28.32 %	936	3,071	30.48 %	1,232	4,584	26.88 %
Irondequoit	4,345	13,096	33.18 %	1,734	4,832	35.89 %	2,611	8,264	31.59 %
Mendon	617	1,760	35.06 %	251	668	37.57 %	366	1,092	33.52 %
Ogden	565	3,217	17.56 %	220	1,244	17.68 %	345	1,973	17.49 %
Parma	782	2,506	31.21 %	332	966	34.37 %	450	1,540	29.22 %
Penfield	2,497	7,488	33.35 %	1,018	2,856	35.64 %	1,479	4,632	31.93 %
Perinton	2,893	9,675	29.90 %	1,196	3,649	32.78 %	1,697	6,026	28.16 %
Pittsford	1,848	5,994	30.83 %	760	2,300	33.04 %	1,088	3,694	29.45 %
Riga	343	857	40.02 %	142	323	43.96 %	201	534	37.64 %
Rush	279	691	40.38 %	115	284	40.49 %	164	407	40.29 %
Sweden	649	1,955	33.20 %	275	780	35.26 %	374	1,175	31.83 %
Webster	2,420	8,480	28.54 %	1,000	3,229	30.97 %	1,420	5,251	27.04 %
Wheatland	296	943	31.39 %	129	377	34.22 %	167	566	29.51 %
TOTAL:	33,765	109,200	30.92 %	13,943	42,014	33.19 %	19,822	67,186	29.50 %
GRAND TOTAL:	46,034	172,267	26.72 %	19,093	67,327	28.36 %	26,941	104,940	25.67 %

2009 GENERAL ELECTION
DEMOCRATIC TURNOUT BY AGE

LT/LD SUMMARY
Part 1 of 2

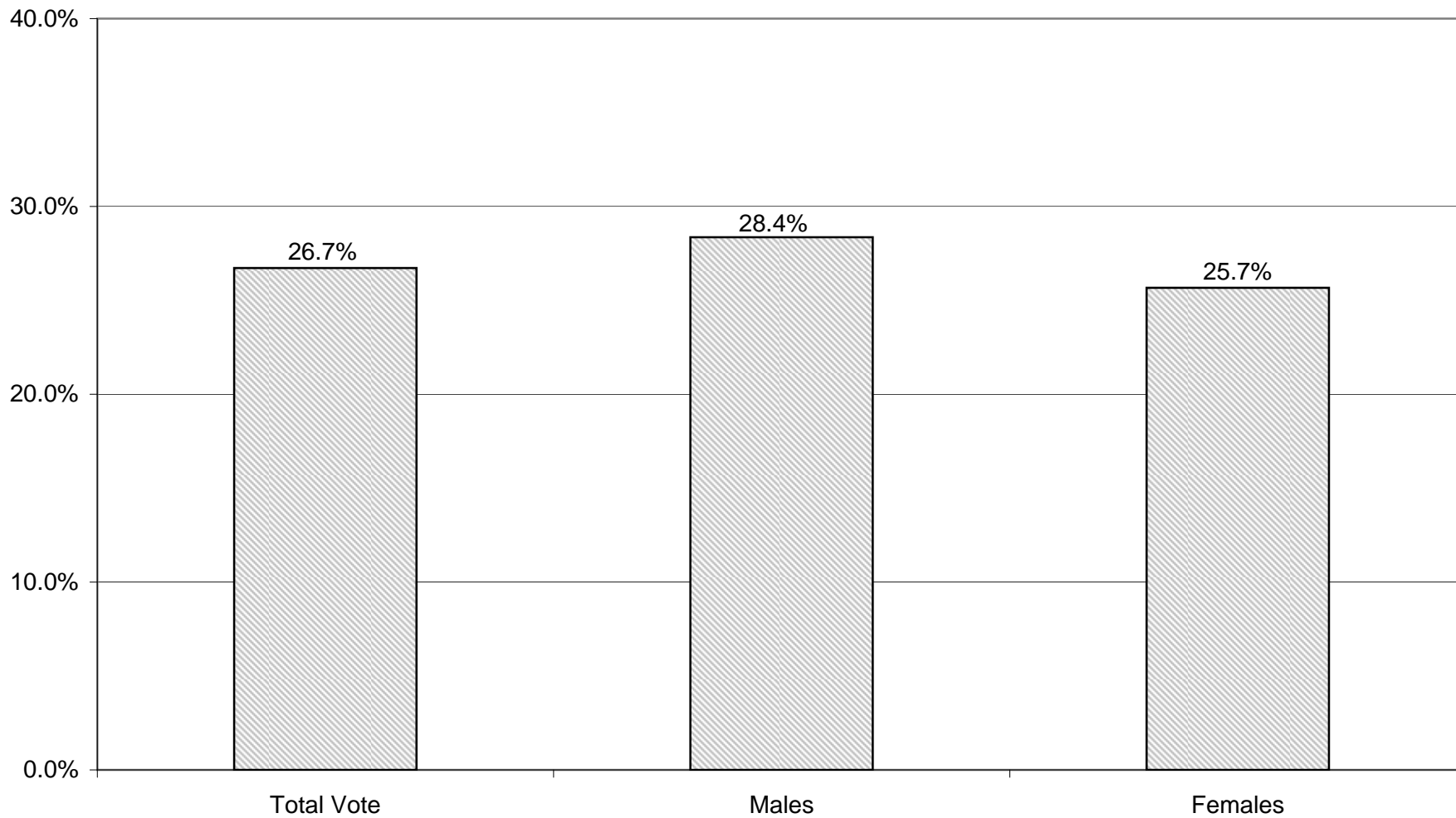
LEGISLATIVE DISTRICT OR TOWN CITY	NDOB			18-24			25-34			35-44		
	VOTED	REGISTERED	TURNOUT	VOTED	REGISTERED	TURNOUT	VOTED	REGISTERED	TURNOUT	VOTED	REGISTERED	TURNOUT
Leg. Dist. 06	10	16	62.50 %	5	101	4.95 %	27	237	11.39 %	35	187	18.72 %
Leg. Dist. 07	1	6	16.67 %	6	51	11.76 %	6	76	7.89 %	10	66	15.15 %
Leg. Dist. 21	33	80	41.25 %	31	943	3.29 %	152	1,748	8.70 %	200	1,630	12.27 %
Leg. Dist. 22	13	39	33.33 %	18	978	1.84 %	41	1,389	2.95 %	100	1,353	7.39 %
Leg. Dist. 23	35	62	56.45 %	38	587	6.47 %	206	1,696	12.15 %	229	1,002	22.85 %
Leg. Dist. 24	16	40	40.00 %	30	325	9.23 %	139	900	15.44 %	172	668	25.75 %
Leg. Dist. 25	26	58	44.83 %	33	952	3.47 %	92	1,350	6.81 %	134	1,281	10.46 %
Leg. Dist. 26	14	26	53.85 %	14	527	2.66 %	36	886	4.06 %	101	765	13.20 %
Leg. Dist. 27	24	65	36.92 %	48	1,299	3.70 %	128	1,846	6.93 %	232	1,923	12.06 %
Leg. Dist. 28	12	40	30.00 %	18	786	2.29 %	49	1,182	4.15 %	87	1,095	7.95 %
Leg. Dist. 29	28	68	41.18 %	18	977	1.84 %	68	1,373	4.95 %	126	1,348	9.35 %
TOTAL:	212	500	42.40 %	259	7,526	3.44 %	944	12,683	7.44 %	1,426	11,318	12.60 %
TOWNS												
Brighton	43	91	47.25 %	55	885	6.21 %	128	1,351	9.47 %	282	1,392	20.26 %
Chili	62	98	63.27 %	23	551	4.17 %	81	947	8.55 %	161	947	17.00 %
Clarkson	1	4	25.00 %	7	93	7.53 %	14	141	9.93 %	44	194	22.68 %
East Rochester	20	40	50.00 %	14	140	10.00 %	38	231	16.45 %	55	231	23.81 %
Gates	18	40	45.00 %	24	543	4.42 %	82	1,002	8.18 %	170	1,042	16.31 %
Greece	134	262	51.15 %	138	1,977	6.98 %	254	2,928	8.67 %	503	2,840	17.71 %
Hamlin	0	6	0.00 %	15	141	10.64 %	18	187	9.63 %	37	205	18.05 %
Henrietta	12	26	46.15 %	49	906	5.41 %	142	1,167	12.17 %	202	1,280	15.78 %
Irondequoit	109	216	50.46 %	83	1,191	6.97 %	220	1,866	11.79 %	411	2,005	20.50 %
Mendon	1	3	33.33 %	10	255	3.92 %	25	179	13.97 %	71	317	22.40 %
Ogden	13	37	35.14 %	5	313	1.60 %	31	467	6.64 %	47	523	8.99 %
Parma	8	11	72.73 %	21	301	6.98 %	33	335	9.85 %	77	402	19.15 %
Penfield	45	96	46.88 %	35	700	5.00 %	91	885	10.28 %	257	1,143	22.48 %
Perinton	11	33	33.33 %	49	1,061	4.62 %	102	1,176	8.67 %	297	1,566	18.97 %
Pittsford	16	41	39.02 %	25	624	4.01 %	47	570	8.25 %	176	918	19.17 %
Riga	1	3	33.33 %	11	83	13.25 %	11	121	9.09 %	39	130	30.00 %
Rush	13	16	81.25 %	8	84	9.52 %	14	80	17.50 %	25	84	29.76 %
Sweden	6	11	54.55 %	26	312	8.33 %	40	296	13.51 %	67	272	24.63 %
Webster	59	125	47.20 %	24	699	3.43 %	107	1,037	10.32 %	198	1,453	13.63 %
Wheatland	3	5	60.00 %	8	111	7.21 %	14	126	11.11 %	29	126	23.02 %
TOTAL:	575	1,164	49.40 %	630	10,970	5.74 %	1,492	15,092	9.89 %	3,148	17,070	18.44 %
GRAND TOTAL:	787	1,664	47.30 %	889	18,496	4.81 %	2,436	27,775	8.77 %	4,574	28,388	16.11 %

2009 GENERAL ELECTION
DEMOCRATIC TURNOUT BY AGE

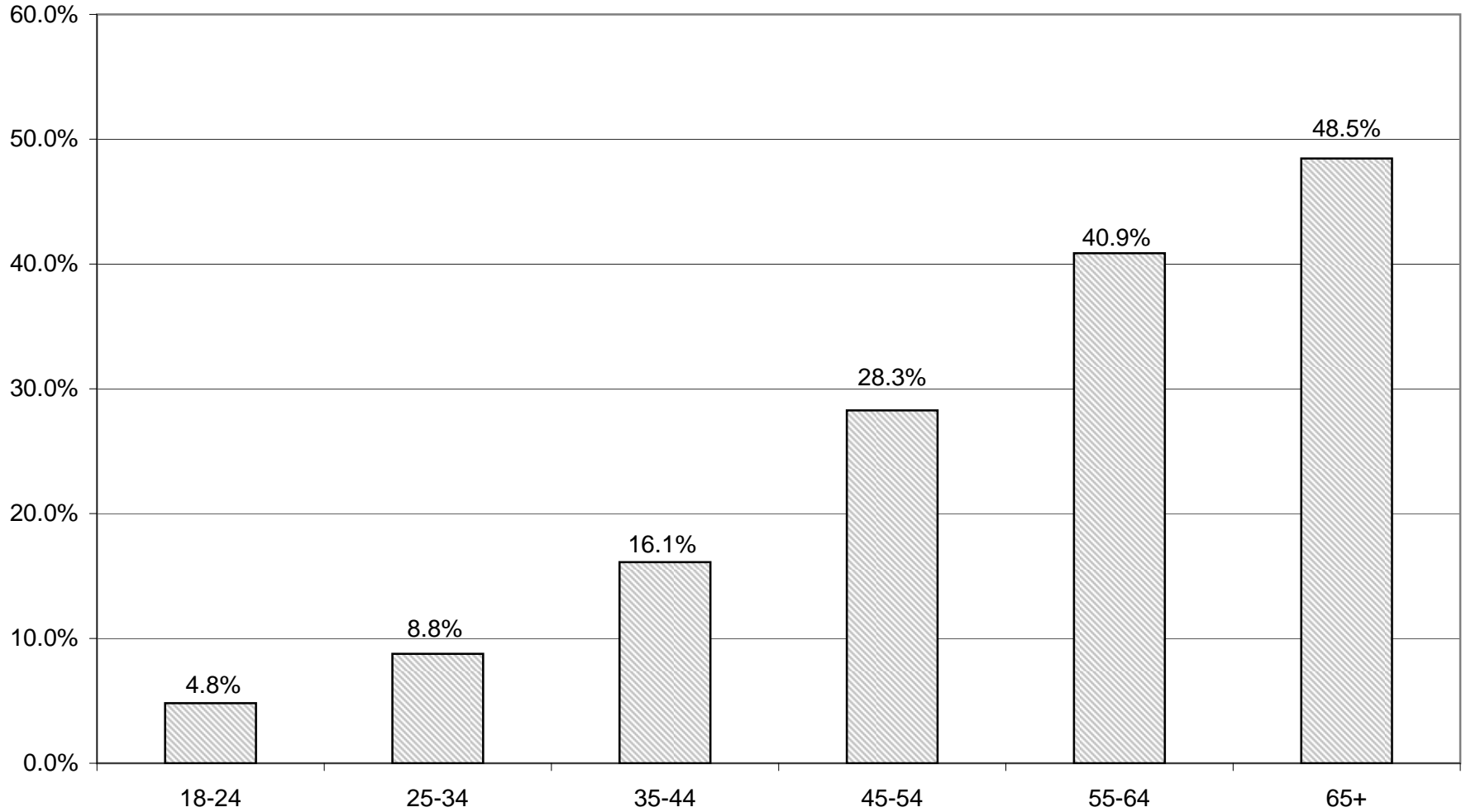
LT/LD SUMMARY
Part 2 of 2

LEGISLATIVE DISTRICT OR TOWN CITY	45-54			55-64			65+		
	VOTED	REGISTERED	TURNOUT	VOTED	REGISTERED	TURNOUT	VOTED	REGISTERED	TURNOUT
Leg. Dist. 06	61	232	26.29 %	84	220	38.18 %	84	202	41.58 %
Leg. Dist. 07	43	133	32.33 %	83	165	50.30 %	81	164	49.39 %
Leg. Dist. 21	340	1,579	21.53 %	414	1,279	32.37 %	428	1,057	40.49 %
Leg. Dist. 22	218	1,469	14.84 %	233	1,094	21.30 %	253	945	26.77 %
Leg. Dist. 23	375	1,031	36.37 %	529	1,094	48.35 %	495	816	60.66 %
Leg. Dist. 24	277	708	39.12 %	356	752	47.34 %	258	524	49.24 %
Leg. Dist. 25	311	1,479	21.03 %	361	1,121	32.20 %	475	1,228	38.68 %
Leg. Dist. 26	136	786	17.30 %	146	530	27.55 %	168	391	42.97 %
Leg. Dist. 27	435	2,128	20.44 %	564	1,609	35.05 %	560	1,460	38.36 %
Leg. Dist. 28	199	1,286	15.47 %	229	895	25.59 %	229	730	31.37 %
Leg. Dist. 29	270	1,543	17.50 %	341	1,240	27.50 %	392	1,150	34.09 %
TOTAL:	2,665	12,374	21.54 %	3,340	9,999	33.40 %	3,423	8,667	39.49 %
TOWNS									
Brighton	600	1,875	32.00 %	860	1,932	44.51 %	1,225	2,192	55.89 %
Chili	325	1,137	28.58 %	429	1,069	40.13 %	589	1,148	51.31 %
Clarkson	54	188	28.72 %	96	197	48.73 %	105	180	58.33 %
East Rochester	86	234	36.75 %	92	195	47.18 %	114	193	59.07 %
Gates	336	1,145	29.34 %	476	1,131	42.09 %	932	1,753	53.17 %
Greece	1,237	3,620	34.17 %	1,695	3,558	47.64 %	2,099	3,907	53.72 %
Hamlin	90	282	31.91 %	110	241	45.64 %	92	197	46.70 %
Henrietta	451	1,436	31.41 %	578	1,331	43.43 %	734	1,509	48.64 %
Irondequoit	874	2,466	35.44 %	1,136	2,414	47.06 %	1,512	2,938	51.46 %
Mendon	187	426	43.90 %	184	348	52.87 %	139	232	59.91 %
Ogden	113	700	16.14 %	173	622	27.81 %	183	555	32.97 %
Parma	200	556	35.97 %	207	448	46.21 %	236	453	52.10 %
Penfield	522	1,490	35.03 %	732	1,533	47.75 %	815	1,641	49.66 %
Perinton	560	1,981	28.27 %	811	1,952	41.55 %	1,063	1,906	55.77 %
Pittsford	401	1,290	31.09 %	518	1,250	41.44 %	665	1,301	51.11 %
Riga	92	215	42.79 %	103	172	59.88 %	86	133	64.66 %
Rush	66	142	46.48 %	90	162	55.56 %	63	123	51.22 %
Sweden	118	343	34.40 %	211	377	55.97 %	181	344	52.62 %
Webster	506	1,659	30.50 %	624	1,596	39.10 %	902	1,911	47.20 %
Wheatland	58	195	29.74 %	81	169	47.93 %	103	211	48.82 %
TOTAL:	6,876	21,380	32.16 %	9,206	20,697	44.48 %	11,838	22,827	51.86 %
GRAND TOTAL:	9,541	33,754	28.27 %	12,546	30,696	40.87 %	15,261	31,494	48.46 %

DEMOCRATIC TURNOUT - TOTAL AND GENDER 2009 GENERAL ELECTION



DEMOCRATIC TURNOUT BY AGE GROUP 2009 GENERAL ELECTION



REPUBLICAN SUMMARY

2009 GENERAL ELECTION
REPUBLICAN TURNOUT BY GENDER

LT/LD SUMMARY

LEGISLATIVE DISTRICT OR TOWN CITY	TOTAL VOTERS			MALES			FEMALES		
	VOTED	REGISTERED	TURNOUT	VOTED	REGISTERED	TURNOUT	VOTED	REGISTERED	TURNOUT
Leg. Dist. 06	297	839	35.40 %	146	407	35.87 %	151	432	34.95 %
Leg. Dist. 07	212	470	45.11 %	108	237	45.57 %	104	233	44.64 %
Leg. Dist. 21	529	1,722	30.72 %	264	853	30.95 %	265	869	30.49 %
Leg. Dist. 22	84	571	14.71 %	41	267	15.36 %	43	304	14.14 %
Leg. Dist. 23	754	2,196	34.34 %	433	1,221	35.46 %	321	975	32.92 %
Leg. Dist. 24	369	1,166	31.65 %	185	574	32.23 %	184	592	31.08 %
Leg. Dist. 25	193	810	23.83 %	109	460	23.70 %	84	350	24.00 %
Leg. Dist. 26	407	1,304	31.21 %	207	652	31.75 %	200	652	30.67 %
Leg. Dist. 27	327	1,100	29.73 %	164	556	29.50 %	163	544	29.96 %
Leg. Dist. 28	325	1,274	25.51 %	176	641	27.46 %	149	633	23.54 %
Leg. Dist. 29	360	1,409	25.55 %	167	681	24.52 %	193	728	26.51 %
TOTAL:	3,857	12,861	29.99 %	2,000	6,549	30.54 %	1,857	6,312	29.42 %
TOWNS									
Brighton	2,306	5,869	39.29 %	1,186	2,861	41.45 %	1,120	3,008	37.23 %
Chili	3,003	7,110	42.24 %	1,591	3,577	44.48 %	1,412	3,533	39.97 %
Clarkson	820	1,653	49.61 %	452	849	53.24 %	368	804	45.77 %
East Rochester	588	1,238	47.50 %	305	610	50.00 %	283	628	45.06 %
Gates	2,787	5,932	46.98 %	1,399	2,880	48.58 %	1,388	3,052	45.48 %
Greece	10,407	23,084	45.08 %	5,423	11,510	47.12 %	4,984	11,574	43.06 %
Hamlin	1,128	2,365	47.70 %	613	1,239	49.48 %	515	1,126	45.74 %
Henrietta	3,042	7,274	41.82 %	1,615	3,678	43.91 %	1,427	3,596	39.68 %
Irondequoit	4,980	10,833	45.97 %	2,551	5,350	47.68 %	2,429	5,483	44.30 %
Mendon	1,269	2,744	46.25 %	697	1,470	47.41 %	572	1,274	44.90 %
Ogden	1,564	5,100	30.67 %	877	2,567	34.16 %	687	2,533	27.12 %
Parma	2,053	4,172	49.21 %	1,091	2,168	50.32 %	962	2,004	48.00 %
Penfield	4,145	9,380	44.19 %	2,189	4,782	45.78 %	1,956	4,598	42.54 %
Perinton	4,990	13,024	38.31 %	2,649	6,580	40.26 %	2,341	6,444	36.33 %
Pittsford	3,153	7,835	40.24 %	1,712	4,001	42.79 %	1,441	3,834	37.58 %
Riga	923	1,762	52.38 %	499	882	56.58 %	424	880	48.18 %
Rush	518	1,075	48.19 %	279	562	49.64 %	239	513	46.59 %
Sweden	1,039	2,443	42.53 %	530	1,221	43.41 %	509	1,222	41.65 %
Webster	3,978	10,311	38.58 %	2,154	5,211	41.34 %	1,824	5,100	35.76 %
Wheatland	564	1,284	43.93 %	286	631	45.32 %	278	653	42.57 %
TOTAL:	53,257	124,488	42.78 %	28,098	62,629	44.86 %	25,159	61,859	40.67 %
GRAND TOTAL:	57,114	137,349	41.58 %	30,098	69,178	43.51 %	27,016	68,171	39.63 %

2009 GENERAL ELECTION
REPUBLICAN TURNOUT BY AGE

LT/LD SUMMARY
Part 1 of 2

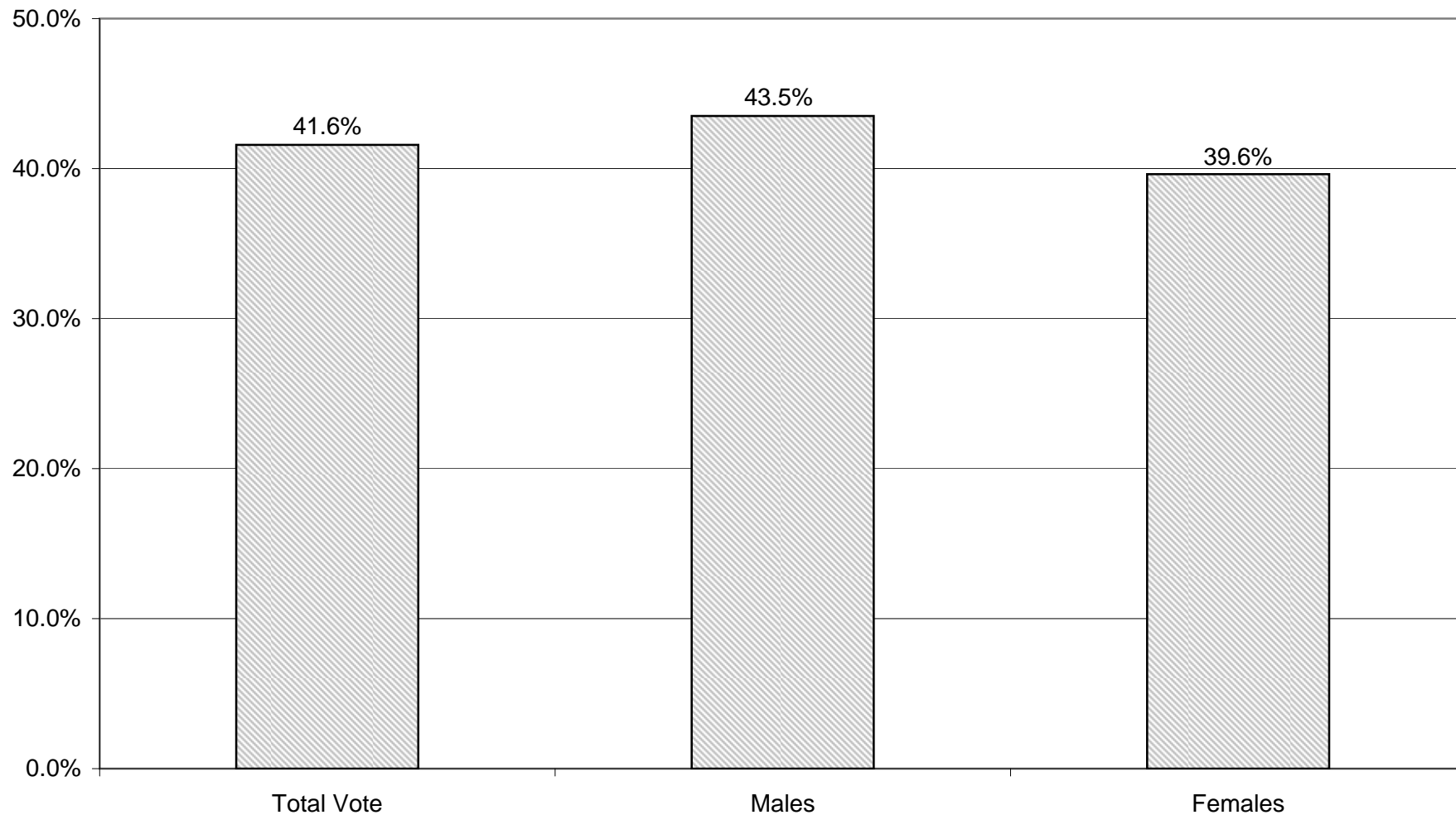
LEGISLATIVE DISTRICT OR TOWN CITY	NDOB			18-24			25-34			35-44		
	VOTED	REGISTERED	TURNOUT	VOTED	REGISTERED	TURNOUT	VOTED	REGISTERED	TURNOUT	VOTED	REGISTERED	TURNOUT
Leg. Dist. 06	16	27	59.26 %	2	42	4.76 %	22	119	18.49 %	32	109	29.36 %
Leg. Dist. 07	6	21	28.57 %	0	16	0.00 %	9	36	25.00 %	10	60	16.67 %
Leg. Dist. 21	40	108	37.04 %	7	104	6.73 %	44	286	15.38 %	45	281	16.01 %
Leg. Dist. 22	3	15	20.00 %	1	45	2.22 %	3	72	4.17 %	6	100	6.00 %
Leg. Dist. 23	45	81	55.56 %	12	124	9.68 %	86	500	17.20 %	89	384	23.18 %
Leg. Dist. 24	21	48	43.75 %	5	55	9.09 %	22	190	11.58 %	32	165	19.39 %
Leg. Dist. 25	11	35	31.43 %	2	68	2.94 %	14	155	9.03 %	16	115	13.91 %
Leg. Dist. 26	18	53	33.96 %	10	71	14.08 %	32	186	17.20 %	37	212	17.45 %
Leg. Dist. 27	23	50	46.00 %	6	73	8.22 %	22	179	12.29 %	30	142	21.13 %
Leg. Dist. 28	20	49	40.82 %	4	63	6.35 %	20	167	11.98 %	34	206	16.50 %
Leg. Dist. 29	26	73	35.62 %	4	72	5.56 %	13	164	7.93 %	29	212	13.68 %
TOTAL:	229	560	40.89 %	53	733	7.23 %	287	2,054	13.97 %	360	1,986	18.13 %
TOWNS												
Brighton	131	256	51.17 %	26	261	9.96 %	101	622	16.24 %	195	759	25.69 %
Chili	123	201	61.19 %	48	453	10.60 %	124	752	16.49 %	312	1,177	26.51 %
Clarkson	2	3	66.67 %	22	108	20.37 %	26	139	18.71 %	136	339	40.12 %
East Rochester	45	71	63.38 %	16	59	27.12 %	39	147	26.53 %	73	205	35.61 %
Gates	50	95	52.63 %	48	277	17.33 %	105	594	17.68 %	249	841	29.61 %
Greece	408	742	54.99 %	197	1,400	14.07 %	359	2,191	16.39 %	998	3,334	29.93 %
Hamlin	13	20	65.00 %	27	154	17.53 %	50	228	21.93 %	117	394	29.70 %
Henrietta	23	55	41.82 %	53	451	11.75 %	138	817	16.89 %	365	1,188	30.72 %
Irondequoit	237	448	52.90 %	71	527	13.47 %	200	1,057	18.92 %	497	1,533	32.42 %
Mendon	6	13	46.15 %	20	189	10.58 %	24	193	12.44 %	141	439	32.12 %
Ogden	25	76	32.89 %	35	322	10.87 %	69	513	13.45 %	175	849	20.61 %
Parma	15	34	44.12 %	46	301	15.28 %	88	377	23.34 %	220	635	34.65 %
Penfield	126	231	54.55 %	80	524	15.27 %	107	740	14.46 %	517	1,522	33.97 %
Perinton	33	82	40.24 %	60	723	8.30 %	151	986	15.31 %	499	2,156	23.14 %
Pittsford	53	102	51.96 %	30	413	7.26 %	51	442	11.54 %	303	1,140	26.58 %
Riga	6	14	42.86 %	27	117	23.08 %	41	161	25.47 %	122	272	44.85 %
Rush	33	56	58.93 %	5	52	9.62 %	13	82	15.85 %	41	138	29.71 %
Sweden	24	36	66.67 %	24	194	12.37 %	40	239	16.74 %	101	343	29.45 %
Webster	124	206	60.19 %	59	527	11.20 %	112	882	12.70 %	422	1,785	23.64 %
Wheatland	10	14	71.43 %	9	95	9.47 %	35	147	23.81 %	55	174	31.61 %
TOTAL:	1,487	2,755	53.97 %	903	7,147	12.63 %	1,873	11,309	16.56 %	5,538	19,223	28.81 %
GRAND TOTAL:	1,716	3,315	51.76 %	956	7,880	12.13 %	2,160	13,363	16.16 %	5,898	21,209	27.81 %

2009 GENERAL ELECTION
REPUBLICAN TURNOUT BY AGE

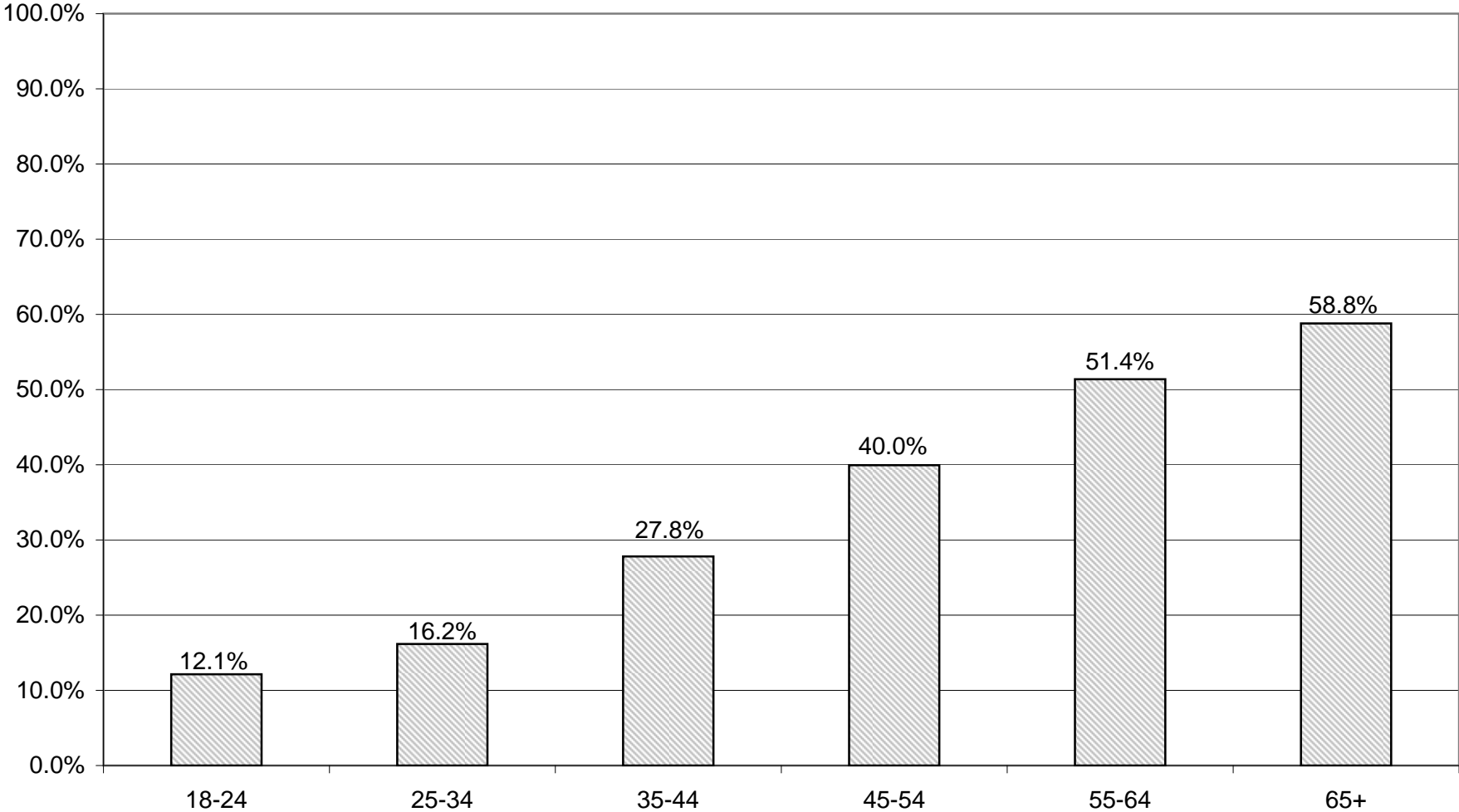
LT/LD SUMMARY
Part 2 of 2

LEGISLATIVE DISTRICT OR TOWN CITY	45-54			55-64			65+		
	VOTED	REGISTERED	TURNOUT	VOTED	REGISTERED	TURNOUT	VOTED	REGISTERED	TURNOUT
Leg. Dist. 06	58	180	32.22 %	66	147	44.90 %	101	215	46.98 %
Leg. Dist. 07	41	82	50.00 %	56	104	53.85 %	90	151	59.60 %
Leg. Dist. 21	91	306	29.74 %	120	269	44.61 %	182	368	49.46 %
Leg. Dist. 22	20	131	15.27 %	22	97	22.68 %	29	111	26.13 %
Leg. Dist. 23	154	393	39.19 %	168	329	51.06 %	200	385	51.95 %
Leg. Dist. 24	65	193	33.68 %	88	194	45.36 %	136	321	42.37 %
Leg. Dist. 25	27	122	22.13 %	48	140	34.29 %	75	175	42.86 %
Leg. Dist. 26	95	300	31.67 %	82	220	37.27 %	133	262	50.76 %
Leg. Dist. 27	64	233	27.47 %	71	191	37.17 %	111	232	47.84 %
Leg. Dist. 28	68	278	24.46 %	77	244	31.56 %	102	267	38.20 %
Leg. Dist. 29	61	272	22.43 %	89	276	32.25 %	138	340	40.59 %
TOTAL:	744	2,490	29.88 %	887	2,211	40.12 %	1,297	2,827	45.88 %
TOWNS									
Brighton	330	1,031	32.01 %	469	976	48.05 %	1,054	1,964	53.67 %
Chili	645	1,585	40.69 %	638	1,176	54.25 %	1,113	1,766	63.02 %
Clarkson	194	386	50.26 %	180	272	66.18 %	260	406	64.04 %
East Rochester	132	277	47.65 %	111	200	55.50 %	172	279	61.65 %
Gates	515	1,159	44.43 %	579	1,002	57.78 %	1,241	1,964	63.19 %
Greece	2,114	4,731	44.68 %	2,212	3,996	55.36 %	4,119	6,690	61.57 %
Hamlin	286	608	47.04 %	296	468	63.25 %	339	493	68.76 %
Henrietta	662	1,561	42.41 %	648	1,260	51.43 %	1,153	1,942	59.37 %
Irondequoit	959	2,056	46.64 %	1,033	1,830	56.45 %	1,983	3,382	58.63 %
Mendon	376	786	47.84 %	300	513	58.48 %	402	611	65.79 %
Ogden	362	1,311	27.61 %	366	937	39.06 %	532	1,092	48.72 %
Parma	501	997	50.25 %	460	736	62.50 %	723	1,092	66.21 %
Penfield	982	2,319	42.35 %	855	1,574	54.32 %	1,478	2,470	59.84 %
Perinton	1,017	3,033	33.53 %	1,088	2,405	45.24 %	2,142	3,639	58.86 %
Pittsford	644	1,837	35.06 %	637	1,392	45.76 %	1,435	2,509	57.19 %
Riga	238	456	52.19 %	207	345	60.00 %	282	397	71.03 %
Rush	131	278	47.12 %	106	194	54.64 %	189	275	68.73 %
Sweden	238	547	43.51 %	246	494	49.80 %	366	590	62.03 %
Webster	861	2,451	35.13 %	852	1,699	50.15 %	1,548	2,761	56.07 %
Wheatland	126	281	44.84 %	120	238	50.42 %	209	335	62.39 %
TOTAL:	11,313	27,690	40.86 %	11,403	21,707	52.53 %	20,740	34,657	59.84 %
GRAND TOTAL:	12,057	30,180	39.95 %	12,290	23,918	51.38 %	22,037	37,484	58.79 %

REPUBLICAN TURNOUT - TOTAL AND GENDER 2009 GENERAL ELECTION



REPUBLICAN TURNOUT BY AGE GROUP 2009 GENERAL ELECTION



INDEPENDENCE SUMMARY

2009 GENERAL ELECTION
INDEPENDENCE TURNOUT BY GENDER

LT/LD SUMMARY

LEGISLATIVE DISTRICT OR TOWN	TOTAL VOTERS			MALES			FEMALES		
	VOTED	REGISTERED	TURNOUT	VOTED	REGISTERED	TURNOUT	VOTED	REGISTERED	TURNOUT
CITY									
Leg. Dist. 06	22	117	18.80 %	9	52	17.31 %	13	65	20.00 %
Leg. Dist. 07	20	72	27.78 %	12	31	38.71 %	8	41	19.51 %
Leg. Dist. 21	56	503	11.13 %	30	239	12.55 %	26	264	9.85 %
Leg. Dist. 22	6	157	3.82 %	3	67	4.48 %	3	90	3.33 %
Leg. Dist. 23	78	581	13.43 %	40	285	14.04 %	38	296	12.84 %
Leg. Dist. 24	39	285	13.68 %	26	149	17.45 %	13	136	9.56 %
Leg. Dist. 25	27	246	10.98 %	16	137	11.68 %	11	109	10.09 %
Leg. Dist. 26	34	263	12.93 %	18	140	12.86 %	16	123	13.01 %
Leg. Dist. 27	30	331	9.06 %	17	176	9.66 %	13	155	8.39 %
Leg. Dist. 28	28	320	8.75 %	14	150	9.33 %	14	170	8.24 %
Leg. Dist. 29	31	270	11.48 %	18	145	12.41 %	13	125	10.40 %
TOTAL:	371	3,145	11.80 %	203	1,571	12.92 %	168	1,574	10.67 %
TOWNS									
Brighton	120	777	15.44 %	68	358	18.99 %	52	419	12.41 %
Chili	122	692	17.63 %	61	322	18.94 %	61	370	16.49 %
Clarkson	44	183	24.04 %	25	87	28.74 %	19	96	19.79 %
East Rochester	54	175	30.86 %	32	95	33.68 %	22	80	27.50 %
Gates	142	672	21.13 %	74	327	22.63 %	68	345	19.71 %
Greece	535	2,491	21.48 %	292	1,140	25.61 %	243	1,351	17.99 %
Hamlin	60	257	23.35 %	36	124	29.03 %	24	133	18.05 %
Henrietta	171	865	19.77 %	87	411	21.17 %	84	454	18.50 %
Irondequoit	364	1,405	25.91 %	172	648	26.54 %	192	757	25.36 %
Mendon	71	269	26.39 %	31	117	26.50 %	40	152	26.32 %
Ogden	60	542	11.07 %	34	266	12.78 %	26	276	9.42 %
Parma	101	425	23.76 %	54	210	25.71 %	47	215	21.86 %
Penfield	226	1,007	22.44 %	121	477	25.37 %	105	530	19.81 %
Perinton	188	1,250	15.04 %	89	559	15.92 %	99	691	14.33 %
Pittsford	150	659	22.76 %	65	272	23.90 %	85	387	21.96 %
Riga	40	173	23.12 %	20	78	25.64 %	20	95	21.05 %
Rush	16	86	18.60 %	9	38	23.68 %	7	48	14.58 %
Sweden	62	300	20.67 %	36	147	24.49 %	26	153	16.99 %
Webster	254	1,251	20.30 %	140	617	22.69 %	114	634	17.98 %
Wheatland	22	137	16.06 %	14	66	21.21 %	8	71	11.27 %
TOTAL:	2,802	13,616	20.58 %	1,460	6,359	22.96 %	1,342	7,257	18.49 %
GRAND TOTAL:	3,173	16,761	18.93 %	1,663	7,930	20.97 %	1,510	8,831	17.10 %

2009 GENERAL ELECTION
INDEPENDENCE TURNOUT BY AGE

LT/LD SUMMARY
Part 1 of 2

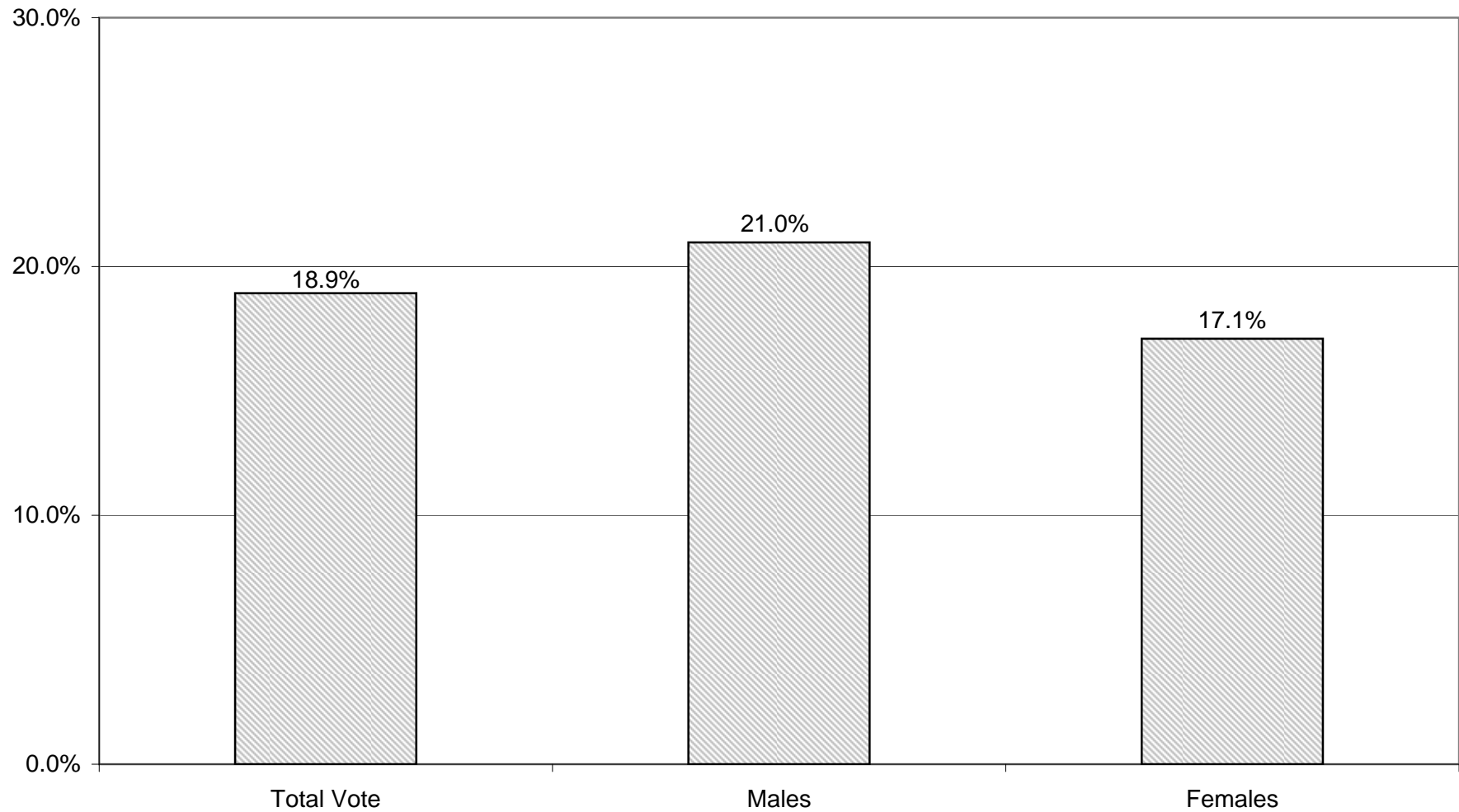
LEGISLATIVE DISTRICT OR TOWN CITY	NDOB			18-24			25-34			35-44		
	VOTED	REGISTERED	TURNOUT	VOTED	REGISTERED	TURNOUT	VOTED	REGISTERED	TURNOUT	VOTED	REGISTERED	TURNOUT
Leg. Dist. 06	0	0	0.00 %	0	8	0.00 %	2	31	6.45 %	4	27	14.81 %
Leg. Dist. 07	0	0	0.00 %	0	4	0.00 %	0	18	0.00 %	4	8	50.00 %
Leg. Dist. 21	0	0	0.00 %	2	70	2.86 %	7	153	4.58 %	14	105	13.33 %
Leg. Dist. 22	0	0	0.00 %	1	39	2.56 %	2	46	4.35 %	0	29	0.00 %
Leg. Dist. 23	0	0	0.00 %	5	79	6.33 %	21	238	8.82 %	19	110	17.27 %
Leg. Dist. 24	0	2	0.00 %	0	33	0.00 %	8	100	8.00 %	11	65	16.92 %
Leg. Dist. 25	0	0	0.00 %	1	50	2.00 %	2	66	3.03 %	6	43	13.95 %
Leg. Dist. 26	0	0	0.00 %	2	31	6.45 %	7	90	7.78 %	4	50	8.00 %
Leg. Dist. 27	0	0	0.00 %	3	57	5.26 %	2	70	2.86 %	7	77	9.09 %
Leg. Dist. 28	0	1	0.00 %	0	53	0.00 %	5	85	5.88 %	5	68	7.35 %
Leg. Dist. 29	0	0	0.00 %	2	47	4.26 %	6	79	7.59 %	5	50	10.00 %
TOTAL:	0	3	0.00 %	16	471	3.40 %	62	976	6.35 %	79	632	12.50 %
TOWNS												
Brighton	0	0	0.00 %	8	114	7.02 %	13	186	6.99 %	19	149	12.75 %
Chili	0	0	0.00 %	4	108	3.70 %	18	186	9.68 %	19	155	12.26 %
Clarkson	0	0	0.00 %	1	20	5.00 %	5	38	13.16 %	8	40	20.00 %
East Rochester	0	0	0.00 %	5	23	21.74 %	9	32	28.13 %	12	39	30.77 %
Gates	0	0	0.00 %	4	95	4.21 %	9	149	6.04 %	22	143	15.38 %
Greece	0	0	0.00 %	27	378	7.14 %	42	555	7.57 %	92	507	18.15 %
Hamlin	0	0	0.00 %	9	56	16.07 %	4	53	7.55 %	11	45	24.44 %
Henrietta	0	0	0.00 %	9	135	6.67 %	24	212	11.32 %	29	184	15.76 %
Irondequoit	0	0	0.00 %	23	207	11.11 %	47	368	12.77 %	71	277	25.63 %
Mendon	0	0	0.00 %	2	59	3.39 %	5	43	11.63 %	17	55	30.91 %
Ogden	0	0	0.00 %	6	110	5.45 %	8	117	6.84 %	5	109	4.59 %
Parma	0	0	0.00 %	0	72	0.00 %	14	80	17.50 %	20	82	24.39 %
Penfield	0	0	0.00 %	9	143	6.29 %	13	192	6.77 %	43	185	23.24 %
Perinton	0	0	0.00 %	3	168	1.79 %	13	256	5.08 %	23	274	8.39 %
Pittsford	0	0	0.00 %	10	118	8.47 %	9	100	9.00 %	28	146	19.18 %
Riga	0	0	0.00 %	3	32	9.38 %	4	36	11.11 %	7	28	25.00 %
Rush	0	0	0.00 %	0	17	0.00 %	2	13	15.38 %	2	12	16.67 %
Sweden	0	0	0.00 %	8	64	12.50 %	4	64	6.25 %	14	57	24.56 %
Webster	0	0	0.00 %	16	200	8.00 %	21	217	9.68 %	35	289	12.11 %
Wheatland	0	0	0.00 %	2	19	10.53 %	3	41	7.32 %	4	26	15.38 %
TOTAL:	0	0	0.00 %	149	2,138	6.97 %	267	2,938	9.09 %	481	2,802	17.17 %
GRAND TOTAL:	0	3	0.00 %	165	2,609	6.32 %	329	3,914	8.41 %	560	3,434	16.31 %

2009 GENERAL ELECTION
INDEPENDENCE TURNOUT BY AGE

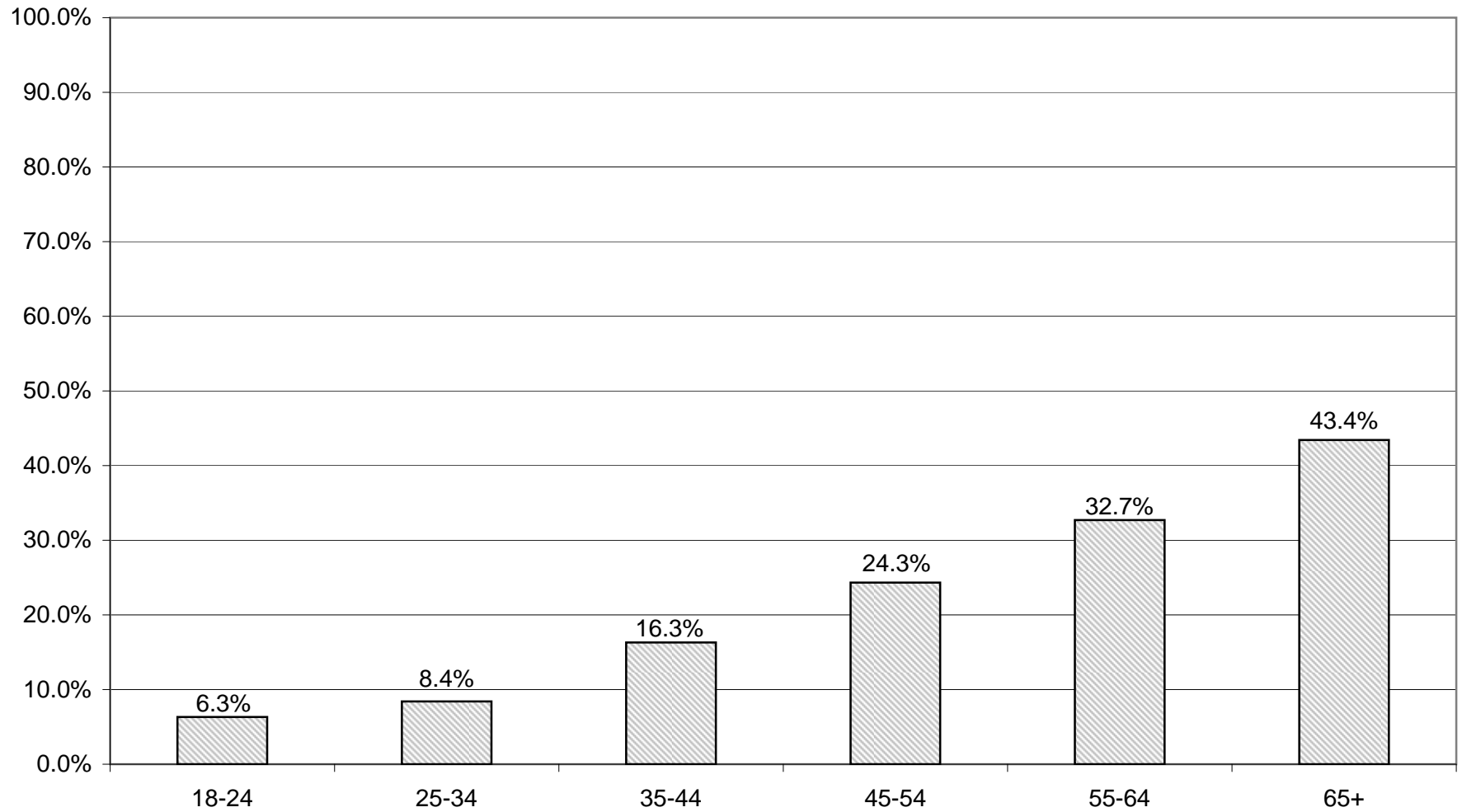
LT/LD SUMMARY
Part 2 of 2

LEGISLATIVE DISTRICT OR TOWN	45-54			55-64			65+		
	VOTED	REGISTERED	TURNOUT	VOTED	REGISTERED	TURNOUT	VOTED	REGISTERED	TURNOUT
CITY									
Leg. Dist. 06	9	28	32.14 %	3	10	30.00 %	4	13	30.77 %
Leg. Dist. 07	6	16	37.50 %	7	17	41.18 %	3	9	33.33 %
Leg. Dist. 21	13	91	14.29 %	8	51	15.69 %	12	33	36.36 %
Leg. Dist. 22	3	24	12.50 %	0	13	0.00 %	0	6	0.00 %
Leg. Dist. 23	15	88	17.05 %	8	44	18.18 %	10	22	45.45 %
Leg. Dist. 24	11	54	20.37 %	4	18	22.22 %	5	13	38.46 %
Leg. Dist. 25	6	39	15.38 %	6	28	21.43 %	6	20	30.00 %
Leg. Dist. 26	13	55	23.64 %	6	27	22.22 %	2	10	20.00 %
Leg. Dist. 27	9	64	14.06 %	7	47	14.89 %	2	16	12.50 %
Leg. Dist. 28	6	64	9.38 %	7	31	22.58 %	5	18	27.78 %
Leg. Dist. 29	9	42	21.43 %	4	33	12.12 %	5	19	26.32 %
TOTAL:	100	565	17.70 %	60	319	18.81 %	54	179	30.17 %
TOWNS									
Brighton	31	149	20.81 %	16	79	20.25 %	33	100	33.00 %
Chili	24	104	23.08 %	27	74	36.49 %	30	65	46.15 %
Clarkson	16	56	28.57 %	8	17	47.06 %	6	12	50.00 %
East Rochester	14	43	32.56 %	8	26	30.77 %	6	12	50.00 %
Gates	33	121	27.27 %	35	84	41.67 %	39	80	48.75 %
Greece	143	499	28.66 %	114	285	40.00 %	117	267	43.82 %
Hamlin	14	55	25.45 %	15	34	44.12 %	7	14	50.00 %
Henrietta	36	164	21.95 %	31	91	34.07 %	42	79	53.16 %
Irondequoit	85	279	30.47 %	74	147	50.34 %	64	127	50.39 %
Mendon	24	60	40.00 %	9	32	28.13 %	14	20	70.00 %
Ogden	15	106	14.15 %	13	59	22.03 %	13	41	31.71 %
Parma	23	86	26.74 %	25	59	42.37 %	19	46	41.30 %
Penfield	69	238	28.99 %	37	112	33.04 %	55	137	40.15 %
Perinton	47	249	18.88 %	41	154	26.62 %	61	149	40.94 %
Pittsford	31	132	23.48 %	26	80	32.50 %	46	83	55.42 %
Riga	16	47	34.04 %	5	17	29.41 %	5	13	38.46 %
Rush	5	22	22.73 %	1	12	8.33 %	6	10	60.00 %
Sweden	14	61	22.95 %	9	28	32.14 %	13	26	50.00 %
Webster	66	264	25.00 %	46	129	35.66 %	70	152	46.05 %
Wheatland	4	30	13.33 %	5	12	41.67 %	4	9	44.44 %
TOTAL:	710	2,765	25.68 %	545	1,531	35.60 %	650	1,442	45.08 %
GRAND TOTAL:	810	3,330	24.32 %	605	1,850	32.70 %	704	1,621	43.43 %

INDEPENDENCE TURNOUT - TOTAL AND GENDER 2009 GENERAL ELECTION



INDEPENDENCE TURNOUT BY AGE GROUP 2009 GENERAL ELECTION



CONSERVATIVE SUMMARY

2009 GENERAL ELECTION
CONSERVATIVE TURNOUT BY GENDER

LT/LD SUMMARY

LEGISLATIVE DISTRICT OR TOWN CITY	TOTAL VOTERS			MALES			FEMALES		
	VOTED	REGISTERED	TURNOUT	VOTED	REGISTERED	TURNOUT	VOTED	REGISTERED	TURNOUT
Leg. Dist. 06	35	90	38.89 %	18	47	38.30 %	17	43	39.53 %
Leg. Dist. 07	14	26	53.85 %	11	18	61.11 %	3	8	37.50 %
Leg. Dist. 21	35	94	37.23 %	25	55	45.45 %	10	39	25.64 %
Leg. Dist. 22	8	44	18.18 %	6	23	26.09 %	2	21	9.52 %
Leg. Dist. 23	36	88	40.91 %	24	52	46.15 %	12	36	33.33 %
Leg. Dist. 24	17	55	30.91 %	10	31	32.26 %	7	24	29.17 %
Leg. Dist. 25	9	48	18.75 %	6	33	18.18 %	3	15	20.00 %
Leg. Dist. 26	32	94	34.04 %	21	56	37.50 %	11	38	28.95 %
Leg. Dist. 27	19	70	27.14 %	12	45	26.67 %	7	25	28.00 %
Leg. Dist. 28	43	120	35.83 %	25	66	37.88 %	18	54	33.33 %
Leg. Dist. 29	26	96	27.08 %	16	57	28.07 %	10	39	25.64 %
TOTAL:	274	825	33.21 %	174	483	36.02 %	100	342	29.24 %
TOWNS									
Brighton	73	200	36.50 %	51	121	42.15 %	22	79	27.85 %
Chili	179	427	41.92 %	113	249	45.38 %	66	178	37.08 %
Clarkson	52	130	40.00 %	35	79	44.30 %	17	51	33.33 %
East Rochester	36	90	40.00 %	21	51	41.18 %	15	39	38.46 %
Gates	178	390	45.64 %	110	209	52.63 %	68	181	37.57 %
Greece	674	1,513	44.55 %	365	793	46.03 %	309	720	42.92 %
Hamlin	48	128	37.50 %	33	71	46.48 %	15	57	26.32 %
Henrietta	168	439	38.27 %	100	245	40.82 %	68	194	35.05 %
Irondequoit	318	655	48.55 %	193	372	51.88 %	125	283	44.17 %
Mendon	51	104	49.04 %	34	66	51.52 %	17	38	44.74 %
Ogden	100	349	28.65 %	63	176	35.80 %	37	173	21.39 %
Parma	115	259	44.40 %	74	144	51.39 %	41	115	35.65 %
Penfield	170	395	43.04 %	110	224	49.11 %	60	171	35.09 %
Perinton	168	437	38.44 %	108	267	40.45 %	60	170	35.29 %
Pittsford	87	199	43.72 %	62	126	49.21 %	25	73	34.25 %
Riga	46	84	54.76 %	29	51	56.86 %	17	33	51.52 %
Rush	25	46	54.35 %	15	23	65.22 %	10	23	43.48 %
Sweden	44	124	35.48 %	27	70	38.57 %	17	54	31.48 %
Webster	196	526	37.26 %	125	303	41.25 %	71	223	31.84 %
Wheatland	33	74	44.59 %	22	49	44.90 %	11	25	44.00 %
TOTAL:	2,761	6,569	42.03 %	1,690	3,689	45.81 %	1,071	2,880	37.19 %
GRAND TOTAL:	3,035	7,394	41.05 %	1,864	4,172	44.68 %	1,171	3,222	36.34 %

2009 GENERAL ELECTION
CONSERVATIVE TURNOUT BY AGE

LT/LD SUMMARY
Part 1 of 2

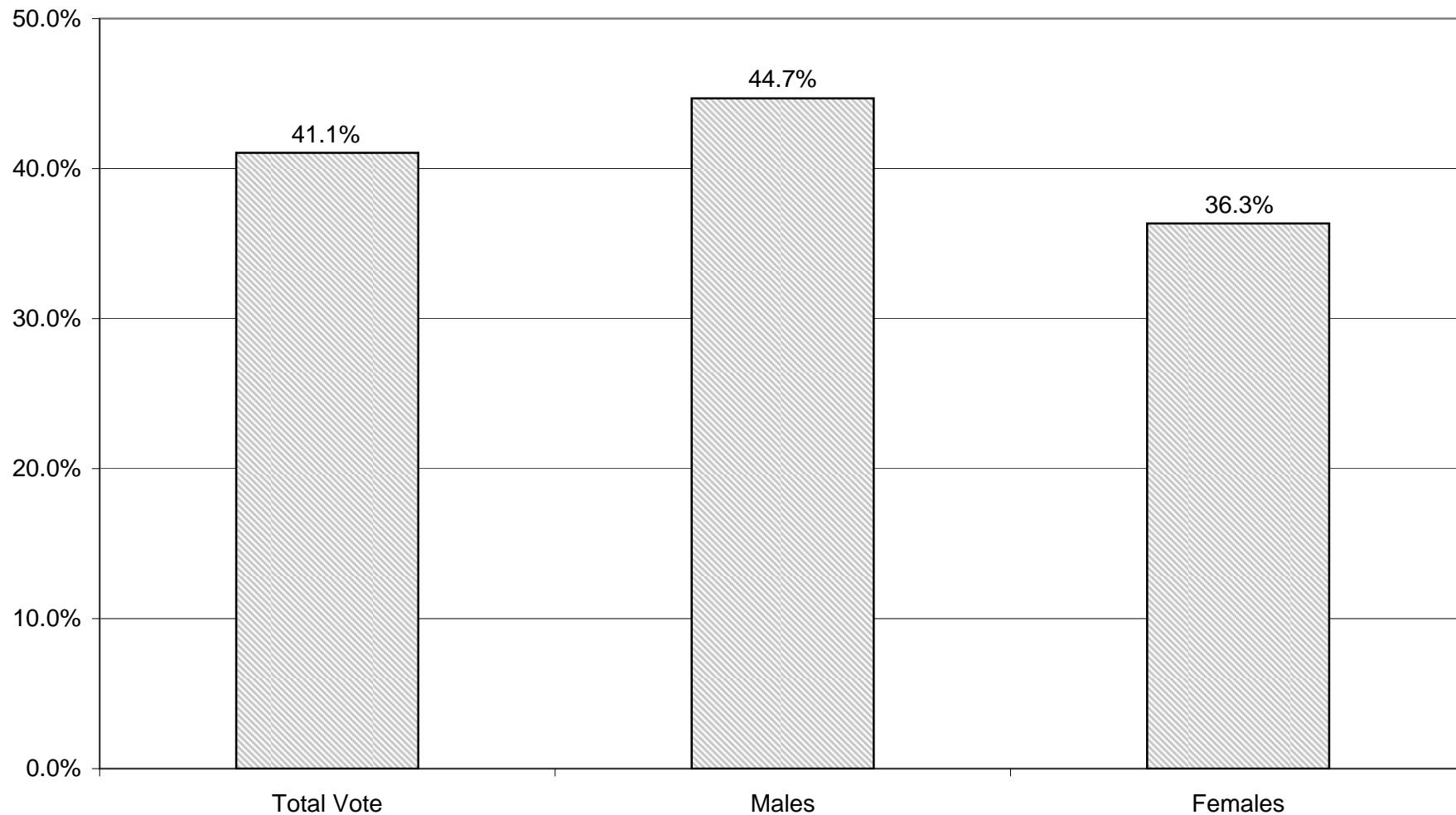
LEGISLATIVE DISTRICT OR TOWN CITY	NDOB			18-24			25-34			35-44		
	VOTED	REGISTERED	TURNOUT	VOTED	REGISTERED	TURNOUT	VOTED	REGISTERED	TURNOUT	VOTED	REGISTERED	TURNOUT
Leg. Dist. 06	0	0	0.00 %	0	8	0.00 %	3	8	37.50 %	5	17	29.41 %
Leg. Dist. 07	0	0	0.00 %	0	0	0.00 %	0	1	0.00 %	1	4	25.00 %
Leg. Dist. 21	3	3	100.00 %	2	5	40.00 %	2	12	16.67 %	2	9	22.22 %
Leg. Dist. 22	0	0	0.00 %	0	1	0.00 %	0	4	0.00 %	0	9	0.00 %
Leg. Dist. 23	0	1	0.00 %	0	3	0.00 %	2	13	15.38 %	3	14	21.43 %
Leg. Dist. 24	2	2	100.00 %	0	6	0.00 %	2	7	28.57 %	1	5	20.00 %
Leg. Dist. 25	0	1	0.00 %	0	3	0.00 %	0	9	0.00 %	0	2	0.00 %
Leg. Dist. 26	0	0	0.00 %	1	6	16.67 %	1	11	9.09 %	4	14	28.57 %
Leg. Dist. 27	0	0	0.00 %	0	4	0.00 %	1	11	9.09 %	4	10	40.00 %
Leg. Dist. 28	0	0	0.00 %	2	7	28.57 %	1	7	14.29 %	1	18	5.56 %
Leg. Dist. 29	0	0	0.00 %	0	4	0.00 %	1	16	6.25 %	3	14	21.43 %
TOTAL:	5	7	71.43 %	5	47	10.64 %	13	99	13.13 %	24	116	20.69 %
TOWNS												
Brighton	0	2	0.00 %	2	9	22.22 %	2	18	11.11 %	10	31	32.26 %
Chili	2	2	100.00 %	3	21	14.29 %	4	49	8.16 %	22	66	33.33 %
Clarkson	0	0	0.00 %	2	7	28.57 %	4	12	33.33 %	11	40	27.50 %
East Rochester	0	1	0.00 %	2	3	66.67 %	0	15	0.00 %	8	13	61.54 %
Gates	0	0	0.00 %	3	18	16.67 %	5	38	13.16 %	18	64	28.13 %
Greece	9	12	75.00 %	15	77	19.48 %	23	150	15.33 %	66	207	31.88 %
Hamlin	0	0	0.00 %	1	5	20.00 %	1	9	11.11 %	4	27	14.81 %
Henrietta	0	1	0.00 %	0	24	0.00 %	9	31	29.03 %	30	84	35.71 %
Irondequoit	7	8	87.50 %	7	30	23.33 %	13	65	20.00 %	32	98	32.65 %
Mendon	0	0	0.00 %	1	10	10.00 %	0	3	0.00 %	10	21	47.62 %
Ogden	0	1	0.00 %	5	28	17.86 %	5	34	14.71 %	6	56	10.71 %
Parma	0	0	0.00 %	1	10	10.00 %	10	27	37.04 %	14	50	28.00 %
Penfield	0	2	0.00 %	3	19	15.79 %	4	31	12.90 %	13	58	22.41 %
Perinton	0	0	0.00 %	4	19	21.05 %	5	34	14.71 %	8	50	16.00 %
Pittsford	1	2	50.00 %	0	7	0.00 %	5	14	35.71 %	10	29	34.48 %
Riga	0	0	0.00 %	1	7	14.29 %	3	7	42.86 %	9	19	47.37 %
Rush	0	0	0.00 %	1	2	50.00 %	0	4	0.00 %	6	9	66.67 %
Sweden	0	0	0.00 %	0	12	0.00 %	2	16	12.50 %	2	15	13.33 %
Webster	1	3	33.33 %	3	30	10.00 %	11	39	28.21 %	17	82	20.73 %
Wheatland	0	0	0.00 %	0	3	0.00 %	0	2	0.00 %	5	13	38.46 %
TOTAL:	20	34	58.82 %	54	341	15.84 %	106	598	17.73 %	301	1,032	29.17 %
GRAND TOTAL:	25	41	60.98 %	59	388	15.21 %	119	697	17.07 %	325	1,148	28.31 %

2009 GENERAL ELECTION
CONSERVATIVE TURNOUT BY AGE

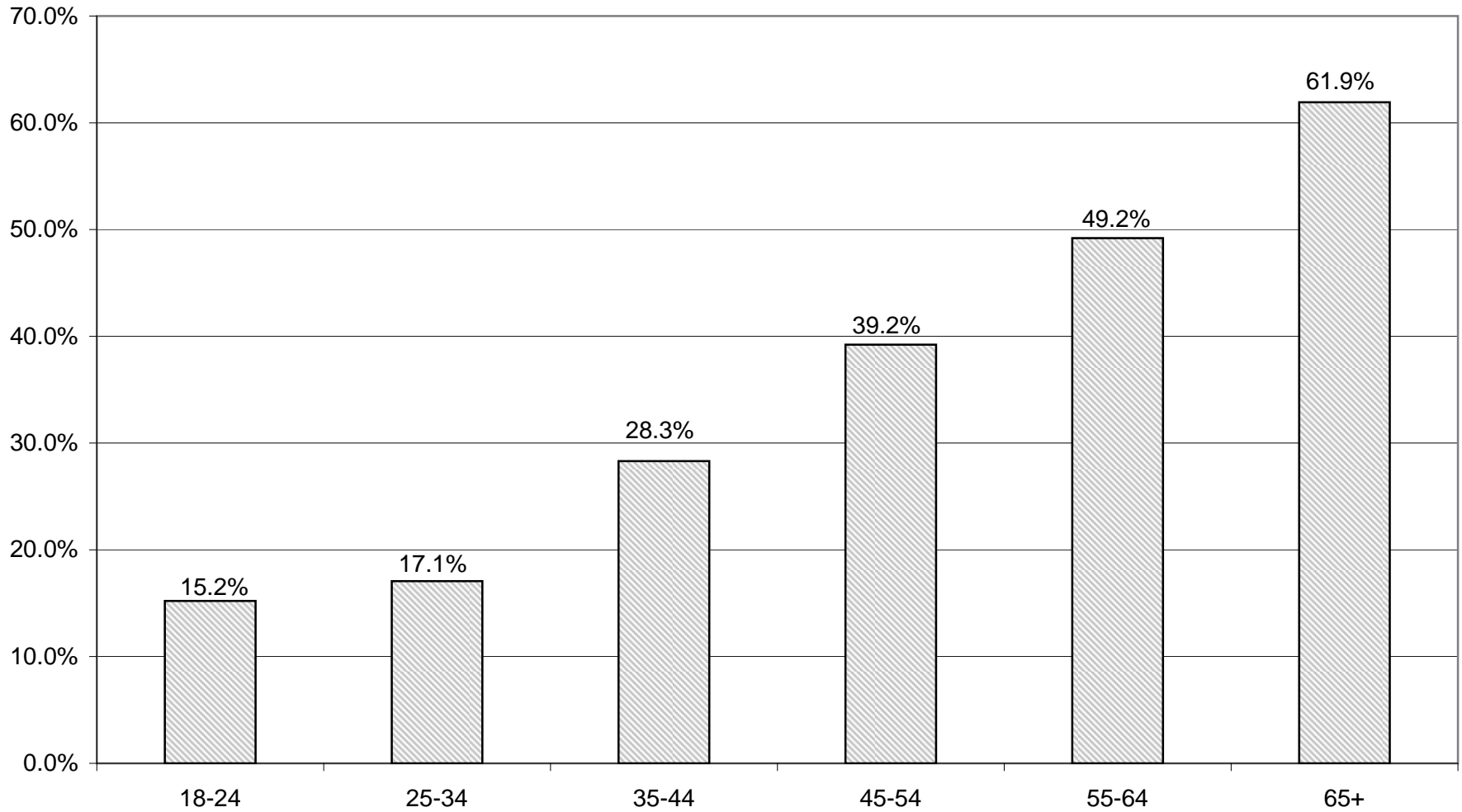
LT/LD SUMMARY
Part 2 of 2

LEGISLATIVE DISTRICT OR TOWN CITY	45-54			55-64			65+		
	VOTED	REGISTERED	TURNOUT	VOTED	REGISTERED	TURNOUT	VOTED	REGISTERED	TURNOUT
Leg. Dist. 06	9	19	47.37 %	9	25	36.00 %	9	13	69.23 %
Leg. Dist. 07	1	4	25.00 %	10	15	66.67 %	2	2	100.00 %
Leg. Dist. 21	7	27	25.93 %	14	26	53.85 %	5	12	41.67 %
Leg. Dist. 22	4	12	33.33 %	2	10	20.00 %	2	8	25.00 %
Leg. Dist. 23	9	21	42.86 %	9	18	50.00 %	13	18	72.22 %
Leg. Dist. 24	5	17	29.41 %	4	13	30.77 %	3	5	60.00 %
Leg. Dist. 25	3	17	17.65 %	2	7	28.57 %	4	9	44.44 %
Leg. Dist. 26	10	23	43.48 %	9	25	36.00 %	7	15	46.67 %
Leg. Dist. 27	4	16	25.00 %	6	18	33.33 %	4	11	36.36 %
Leg. Dist. 28	12	30	40.00 %	11	36	30.56 %	16	22	72.73 %
Leg. Dist. 29	7	22	31.82 %	9	25	36.00 %	6	15	40.00 %
TOTAL:	71	208	34.13 %	85	218	38.99 %	71	130	54.62 %
TOWNS									
Brighton	14	45	31.11 %	12	44	27.27 %	33	51	64.71 %
Chili	36	107	33.64 %	50	89	56.18 %	62	93	66.67 %
Clarkson	20	42	47.62 %	8	19	42.11 %	7	10	70.00 %
East Rochester	11	28	39.29 %	13	26	50.00 %	2	4	50.00 %
Gates	51	107	47.66 %	51	86	59.30 %	50	77	64.94 %
Greece	173	426	40.61 %	200	364	54.95 %	188	277	67.87 %
Hamlin	22	46	47.83 %	11	28	39.29 %	9	13	69.23 %
Henrietta	29	107	27.10 %	43	92	46.74 %	57	100	57.00 %
Irondequoit	78	148	52.70 %	100	169	59.17 %	81	137	59.12 %
Mendon	13	29	44.83 %	12	21	57.14 %	15	20	75.00 %
Ogden	32	110	29.09 %	20	67	29.85 %	32	53	60.38 %
Parma	30	73	41.10 %	35	60	58.33 %	25	39	64.10 %
Penfield	44	90	48.89 %	54	115	46.96 %	52	80	65.00 %
Perinton	32	98	32.65 %	47	98	47.96 %	72	138	52.17 %
Pittsford	19	40	47.50 %	18	47	38.30 %	34	60	56.67 %
Riga	14	23	60.87 %	10	16	62.50 %	9	12	75.00 %
Rush	2	11	18.18 %	9	12	75.00 %	7	8	87.50 %
Sweden	16	40	40.00 %	16	28	57.14 %	8	13	61.54 %
Webster	47	140	33.57 %	54	129	41.86 %	63	103	61.17 %
Wheatland	8	25	32.00 %	12	20	60.00 %	8	11	72.73 %
TOTAL:	691	1,735	39.83 %	775	1,530	50.65 %	814	1,299	62.66 %
GRAND TOTAL:	762	1,943	39.22 %	860	1,748	49.20 %	885	1,429	61.93 %

CONSERVATIVE TURNOUT - TOTAL AND GENDER 2009 GENERAL ELECTION



CONSERVATIVE TURNOUT BY AGE GROUP 2009 GENERAL ELECTION



WORKING FAMILIES SUMMARY

2009 GENERAL ELECTION
WORKING FAMILIES TURNOUT BY GENDER

LT/LD SUMMARY

LEGISLATIVE DISTRICT OR TOWN CITY	TOTAL VOTERS			MALES			FEMALES		
	VOTED	REGISTERED	TURNOUT	VOTED	REGISTERED	TURNOUT	VOTED	REGISTERED	TURNOUT
Leg. Dist. 06	1	9	11.11 %	1	3	33.33 %	0	6	0.00 %
Leg. Dist. 07	1	4	25.00 %	0	1	0.00 %	1	3	33.33 %
Leg. Dist. 21	4	56	7.14 %	3	19	15.79 %	1	37	2.70 %
Leg. Dist. 22	1	83	1.20 %	1	37	2.70 %	0	46	0.00 %
Leg. Dist. 23	5	32	15.63 %	4	18	22.22 %	1	14	7.14 %
Leg. Dist. 24	6	28	21.43 %	4	14	28.57 %	2	14	14.29 %
Leg. Dist. 25	2	38	5.26 %	2	15	13.33 %	0	23	0.00 %
Leg. Dist. 26	3	45	6.67 %	1	18	5.56 %	2	27	7.41 %
Leg. Dist. 27	5	64	7.81 %	1	25	4.00 %	4	39	10.26 %
Leg. Dist. 28	2	79	2.53 %	0	26	0.00 %	2	53	3.77 %
Leg. Dist. 29	3	75	4.00 %	1	32	3.13 %	2	43	4.65 %
TOTAL:	33	513	6.43 %	18	208	8.65 %	15	305	4.92 %
TOWNS									
Brighton	1	23	4.35 %	0	7	0.00 %	1	16	6.25 %
Chili	10	36	27.78 %	6	17	35.29 %	4	19	21.05 %
Clarkson	2	12	16.67 %	1	7	14.29 %	1	5	20.00 %
East Rochester	1	17	5.88 %	0	10	0.00 %	1	7	14.29 %
Gates	11	64	17.19 %	5	25	20.00 %	6	39	15.38 %
Greece	30	162	18.52 %	18	63	28.57 %	12	99	12.12 %
Hamlin	2	12	16.67 %	1	2	50.00 %	1	10	10.00 %
Henrietta	5	37	13.51 %	2	17	11.76 %	3	20	15.00 %
Irondequoit	11	69	15.94 %	4	27	14.81 %	7	42	16.67 %
Mendon	1	4	25.00 %	0	2	0.00 %	1	2	50.00 %
Ogden	3	32	9.38 %	1	17	5.88 %	2	15	13.33 %
Parma	12	44	27.27 %	9	29	31.03 %	3	15	20.00 %
Penfield	6	30	20.00 %	4	13	30.77 %	2	17	11.76 %
Perinton	4	44	9.09 %	1	22	4.55 %	3	22	13.64 %
Pittsford	2	15	13.33 %	1	6	16.67 %	1	9	11.11 %
Riga	3	9	33.33 %	1	4	25.00 %	2	5	40.00 %
Rush	0	7	0.00 %	0	6	0.00 %	0	1	0.00 %
Sweden	1	22	4.55 %	0	9	0.00 %	1	13	7.69 %
Webster	7	47	14.89 %	6	26	23.08 %	1	21	4.76 %
Wheatland	1	5	20.00 %	1	4	25.00 %	0	1	0.00 %
TOTAL:	113	691	16.35 %	61	313	19.49 %	52	378	13.76 %
GRAND TOTAL:	146	1,204	12.13 %	79	521	15.16 %	67	683	9.81 %

2009 GENERAL ELECTION
WORKING FAMILIES TURNOUT BY AGE

LT/LD SUMMARY
Part 1 of 2

LEGISLATIVE DISTRICT OR TOWN CITY	NDOB			18-24			25-34			35-44		
	VOTED	REGISTERED	TURNOUT	VOTED	REGISTERED	TURNOUT	VOTED	REGISTERED	TURNOUT	VOTED	REGISTERED	TURNOUT
Leg. Dist. 06	0	0	0.00 %	0	0	0.00 %	0	1	0.00 %	1	4	25.00 %
Leg. Dist. 07	0	0	0.00 %	0	0	0.00 %	0	1	0.00 %	0	2	0.00 %
Leg. Dist. 21	0	0	0.00 %	1	9	11.11 %	3	24	12.50 %	0	10	0.00 %
Leg. Dist. 22	0	0	0.00 %	0	16	0.00 %	0	33	0.00 %	0	17	0.00 %
Leg. Dist. 23	0	0	0.00 %	0	2	0.00 %	0	7	0.00 %	2	10	20.00 %
Leg. Dist. 24	0	0	0.00 %	0	3	0.00 %	1	9	11.11 %	2	7	28.57 %
Leg. Dist. 25	0	0	0.00 %	0	5	0.00 %	0	9	0.00 %	0	12	0.00 %
Leg. Dist. 26	0	0	0.00 %	0	7	0.00 %	0	16	0.00 %	1	11	9.09 %
Leg. Dist. 27	0	0	0.00 %	0	15	0.00 %	0	18	0.00 %	1	14	7.14 %
Leg. Dist. 28	0	0	0.00 %	1	14	7.14 %	0	16	0.00 %	1	32	3.13 %
Leg. Dist. 29	0	0	0.00 %	0	13	0.00 %	2	34	5.88 %	0	15	0.00 %
TOTAL:	0	0	0.00 %	2	84	2.38 %	6	168	3.57 %	8	134	5.97 %
TOWNS												
Brighton	0	0	0.00 %	0	2	0.00 %	0	5	0.00 %	0	11	0.00 %
Chili	0	0	0.00 %	0	3	0.00 %	0	7	0.00 %	3	9	33.33 %
Clarkson	0	0	0.00 %	0	0	0.00 %	0	5	0.00 %	1	3	33.33 %
East Rochester	0	0	0.00 %	0	2	0.00 %	0	3	0.00 %	1	7	14.29 %
Gates	0	0	0.00 %	0	4	0.00 %	1	18	5.56 %	4	21	19.05 %
Greece	0	0	0.00 %	2	14	14.29 %	1	30	3.33 %	7	62	11.29 %
Hamlin	0	0	0.00 %	0	0	0.00 %	0	2	0.00 %	0	5	0.00 %
Henrietta	0	0	0.00 %	0	1	0.00 %	1	10	10.00 %	1	7	14.29 %
Irondequoit	0	0	0.00 %	0	6	0.00 %	3	20	15.00 %	2	21	9.52 %
Mendon	0	0	0.00 %	0	1	0.00 %	0	1	0.00 %	0	0	0.00 %
Ogden	0	0	0.00 %	0	2	0.00 %	0	6	0.00 %	2	8	25.00 %
Parma	0	0	0.00 %	0	4	0.00 %	1	6	16.67 %	3	17	17.65 %
Penfield	0	0	0.00 %	1	3	33.33 %	0	4	0.00 %	0	6	0.00 %
Perinton	0	0	0.00 %	0	3	0.00 %	1	16	6.25 %	1	12	8.33 %
Pittsford	0	0	0.00 %	1	3	33.33 %	0	1	0.00 %	1	2	50.00 %
Riga	0	0	0.00 %	0	0	0.00 %	1	3	33.33 %	1	4	25.00 %
Rush	0	0	0.00 %	0	1	0.00 %	0	0	0.00 %	0	2	0.00 %
Sweden	0	0	0.00 %	0	2	0.00 %	0	5	0.00 %	1	10	10.00 %
Webster	0	0	0.00 %	0	2	0.00 %	1	14	7.14 %	2	10	20.00 %
Wheatland	0	0	0.00 %	0	0	0.00 %	0	1	0.00 %	0	1	0.00 %
TOTAL:	0	0	0.00 %	4	53	7.55 %	10	157	6.37 %	30	218	13.76 %
GRAND TOTAL:	0	0	0.00 %	6	137	4.38 %	16	325	4.92 %	38	352	10.80 %

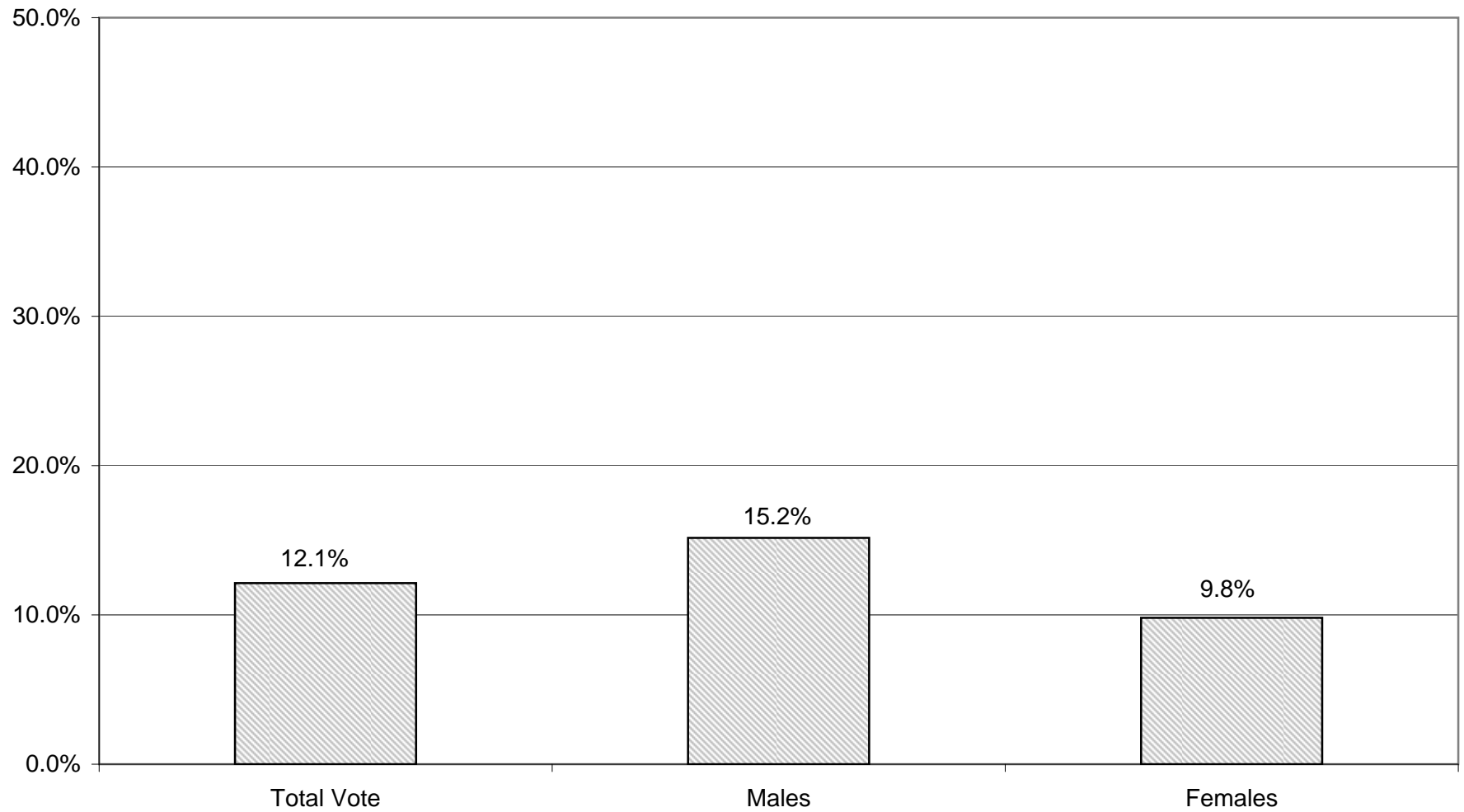
2009 GENERAL ELECTION
WORKING FAMILIES TURNOUT BY AGE

LT/LD SUMMARY

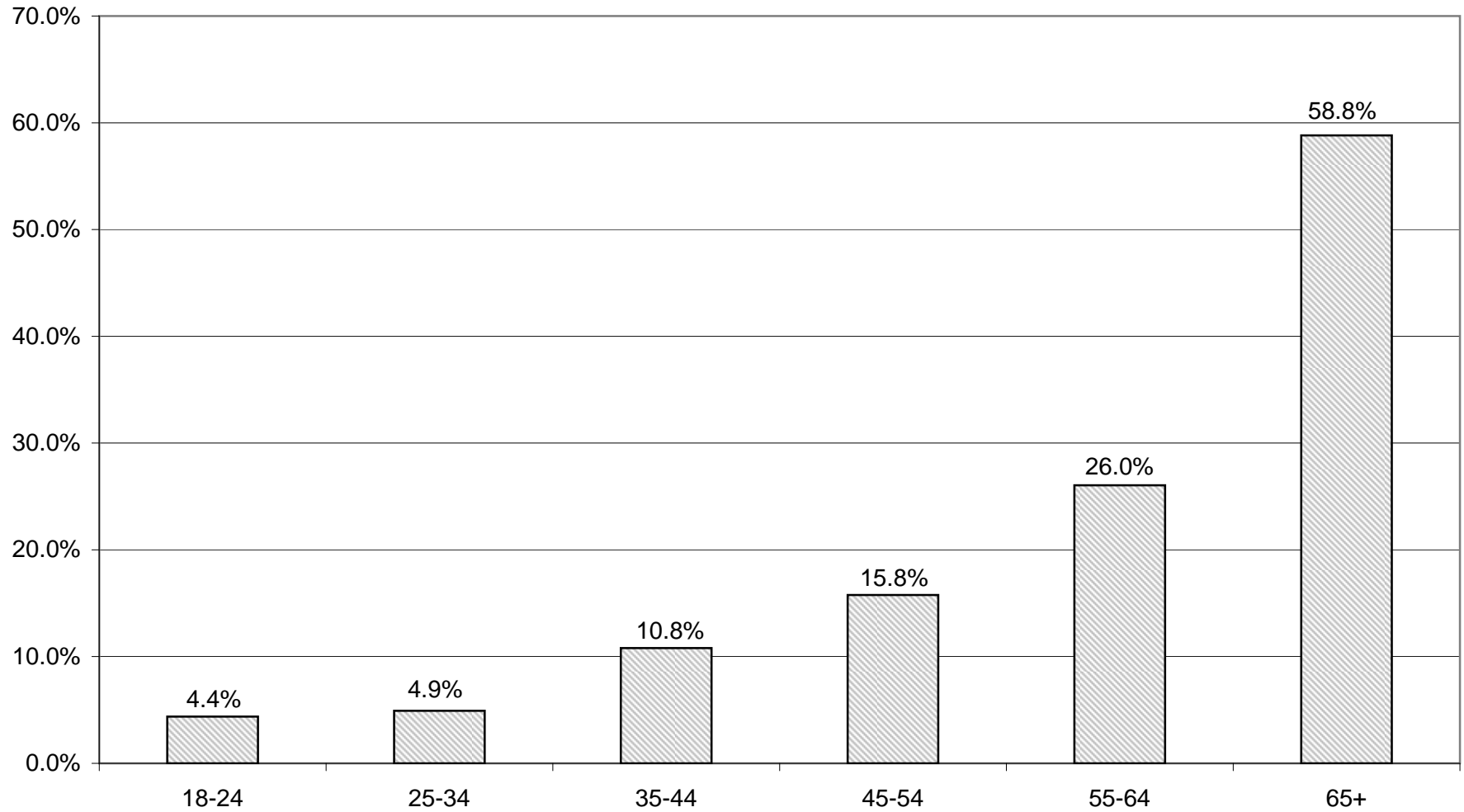
Part 2 of 2

LEGISLATIVE DISTRICT OR TOWN	45-54			55-64			65+		
	VOTED	REGISTERED	TURNOUT	VOTED	REGISTERED	TURNOUT	VOTED	REGISTERED	TURNOUT
CITY									
Leg. Dist. 06	0	4	0.00 %	0	0	0.00 %	0	0	0.00 %
Leg. Dist. 07	1	1	100.00 %	0	0	0.00 %	0	0	0.00 %
Leg. Dist. 21	0	10	0.00 %	0	3	0.00 %	0	0	0.00 %
Leg. Dist. 22	0	11	0.00 %	1	6	16.67 %	0	0	0.00 %
Leg. Dist. 23	0	7	0.00 %	0	3	0.00 %	3	3	100.00 %
Leg. Dist. 24	1	4	25.00 %	1	4	25.00 %	1	1	100.00 %
Leg. Dist. 25	1	8	12.50 %	1	4	25.00 %	0	0	0.00 %
Leg. Dist. 26	0	7	0.00 %	0	2	0.00 %	2	2	100.00 %
Leg. Dist. 27	1	10	10.00 %	1	4	25.00 %	2	3	66.67 %
Leg. Dist. 28	0	13	0.00 %	0	3	0.00 %	0	1	0.00 %
Leg. Dist. 29	1	8	12.50 %	0	5	0.00 %	0	0	0.00 %
TOTAL:	5	83	6.02 %	4	34	11.76 %	8	10	80.00 %
TOWNS									
Brighton	1	5	20.00 %	0	0	0.00 %	0	0	0.00 %
Chili	3	10	30.00 %	4	7	57.14 %	0	0	0.00 %
Clarkson	1	4	25.00 %	0	0	0.00 %	0	0	0.00 %
East Rochester	0	3	0.00 %	0	1	0.00 %	0	1	0.00 %
Gates	1	14	7.14 %	2	4	50.00 %	3	3	100.00 %
Greece	15	38	39.47 %	1	12	8.33 %	4	6	66.67 %
Hamlin	2	4	50.00 %	0	1	0.00 %	0	0	0.00 %
Henrietta	1	13	7.69 %	2	6	33.33 %	0	0	0.00 %
Irondequoit	2	14	14.29 %	3	5	60.00 %	1	3	33.33 %
Mendon	0	0	0.00 %	1	2	50.00 %	1	0	0.00 %
Ogden	1	12	8.33 %	0	4	0.00 %	0	0	0.00 %
Parma	5	11	45.45 %	2	3	66.67 %	1	3	33.33 %
Penfield	0	8	0.00 %	2	5	40.00 %	3	4	75.00 %
Perinton	1	9	11.11 %	1	4	25.00 %	0	0	0.00 %
Pittsford	0	6	0.00 %	0	2	0.00 %	0	1	0.00 %
Riga	0	1	0.00 %	1	1	100.00 %	0	0	0.00 %
Rush	0	3	0.00 %	0	1	0.00 %	0	0	0.00 %
Sweden	0	5	0.00 %	0	0	0.00 %	0	0	0.00 %
Webster	2	14	14.29 %	2	4	50.00 %	0	3	0.00 %
Wheatland	1	3	33.33 %	0	0	0.00 %	0	0	0.00 %
TOTAL:	36	177	20.34 %	21	62	33.87 %	12	24	50.00 %
GRAND TOTAL:	41	260	15.77 %	25	96	26.04 %	20	34	58.82 %

WORKING FAMILIES TURNOUT - TOTAL AND GENDER 2009 GENERAL ELECTION



WORKING FAMILIES TURNOUT BY AGE GROUP 2009 GENERAL ELECTION



BLANKS SUMMARY

2009 GENERAL ELECTION
BLANK TURNOUT BY GENDER

LT/LD SUMMARY

LEGISLATIVE DISTRICT OR TOWN CITY	TOTAL VOTERS			MALES			FEMALES		
	VOTED	REGISTERED	TURNOUT	VOTED	REGISTERED	TURNOUT	VOTED	REGISTERED	TURNOUT
Leg. Dist. 06	164	744	22.04 %	78	345	22.61 %	86	399	21.55 %
Leg. Dist. 07	95	364	26.10 %	47	178	26.40 %	48	186	25.81 %
Leg. Dist. 21	340	2,523	13.48 %	194	1,243	15.61 %	146	1,280	11.41 %
Leg. Dist. 22	43	1,389	3.10 %	27	606	4.46 %	16	783	2.04 %
Leg. Dist. 23	562	2,871	19.58 %	338	1,548	21.83 %	224	1,323	16.93 %
Leg. Dist. 24	337	1,627	20.71 %	196	855	22.92 %	141	772	18.26 %
Leg. Dist. 25	179	1,621	11.04 %	106	829	12.79 %	73	792	9.22 %
Leg. Dist. 26	181	1,412	12.82 %	106	645	16.43 %	75	767	9.78 %
Leg. Dist. 27	235	1,850	12.70 %	112	873	12.83 %	123	977	12.59 %
Leg. Dist. 28	162	1,838	8.81 %	101	818	12.35 %	61	1,020	5.98 %
Leg. Dist. 29	162	1,954	8.29 %	98	868	11.29 %	64	1,086	5.89 %
TOTAL:	2,460	18,193	13.52 %	1,403	8,808	15.93 %	1,057	9,385	11.26 %
TOWNS									
Brighton	1,228	5,088	24.14 %	661	2,547	25.95 %	567	2,541	22.31 %
Chili	1,090	4,533	24.05 %	604	2,217	27.24 %	486	2,316	20.98 %
Clarkson	237	848	27.95 %	119	419	28.40 %	118	429	27.51 %
East Rochester	285	985	28.93 %	138	452	30.53 %	147	533	27.58 %
Gates	1,000	4,147	24.11 %	526	2,019	26.05 %	474	2,128	22.27 %
Greece	4,175	15,110	27.63 %	2,171	7,146	30.38 %	2,004	7,964	25.16 %
Hamlin	250	1,211	20.64 %	148	587	25.21 %	102	624	16.35 %
Henrietta	1,123	5,048	22.25 %	634	2,602	24.37 %	489	2,446	19.99 %
Irondequoit	2,577	8,525	30.23 %	1,331	4,070	32.70 %	1,246	4,455	27.97 %
Mendon	465	1,428	32.56 %	252	708	35.59 %	213	720	29.58 %
Ogden	462	3,100	14.90 %	265	1,525	17.38 %	197	1,575	12.51 %
Parma	810	2,740	29.56 %	424	1,320	32.12 %	386	1,420	27.18 %
Penfield	1,886	6,318	29.85 %	1,010	3,071	32.89 %	876	3,247	26.98 %
Perinton	1,904	8,185	23.26 %	1,049	4,069	25.78 %	855	4,116	20.77 %
Pittsford	1,032	4,616	22.36 %	541	2,245	24.10 %	491	2,371	20.71 %
Riga	285	922	30.91 %	150	473	31.71 %	135	449	30.07 %
Rush	189	629	30.05 %	101	325	31.08 %	88	304	28.95 %
Sweden	405	1,508	26.86 %	217	722	30.06 %	188	786	23.92 %
Webster	1,839	7,343	25.04 %	995	3,523	28.24 %	844	3,820	22.09 %
Wheatland	175	763	22.94 %	91	368	24.73 %	84	395	21.27 %
TOTAL:	21,417	83,047	25.79 %	11,427	40,408	28.28 %	9,990	42,639	23.43 %
GRAND TOTAL:	23,877	101,240	23.58 %	12,830	49,216	26.07 %	11,047	52,024	21.23 %

2009 GENERAL ELECTION
BLANK TURNOUT BY AGE

LT/LD SUMMARY
Part 1 of 2

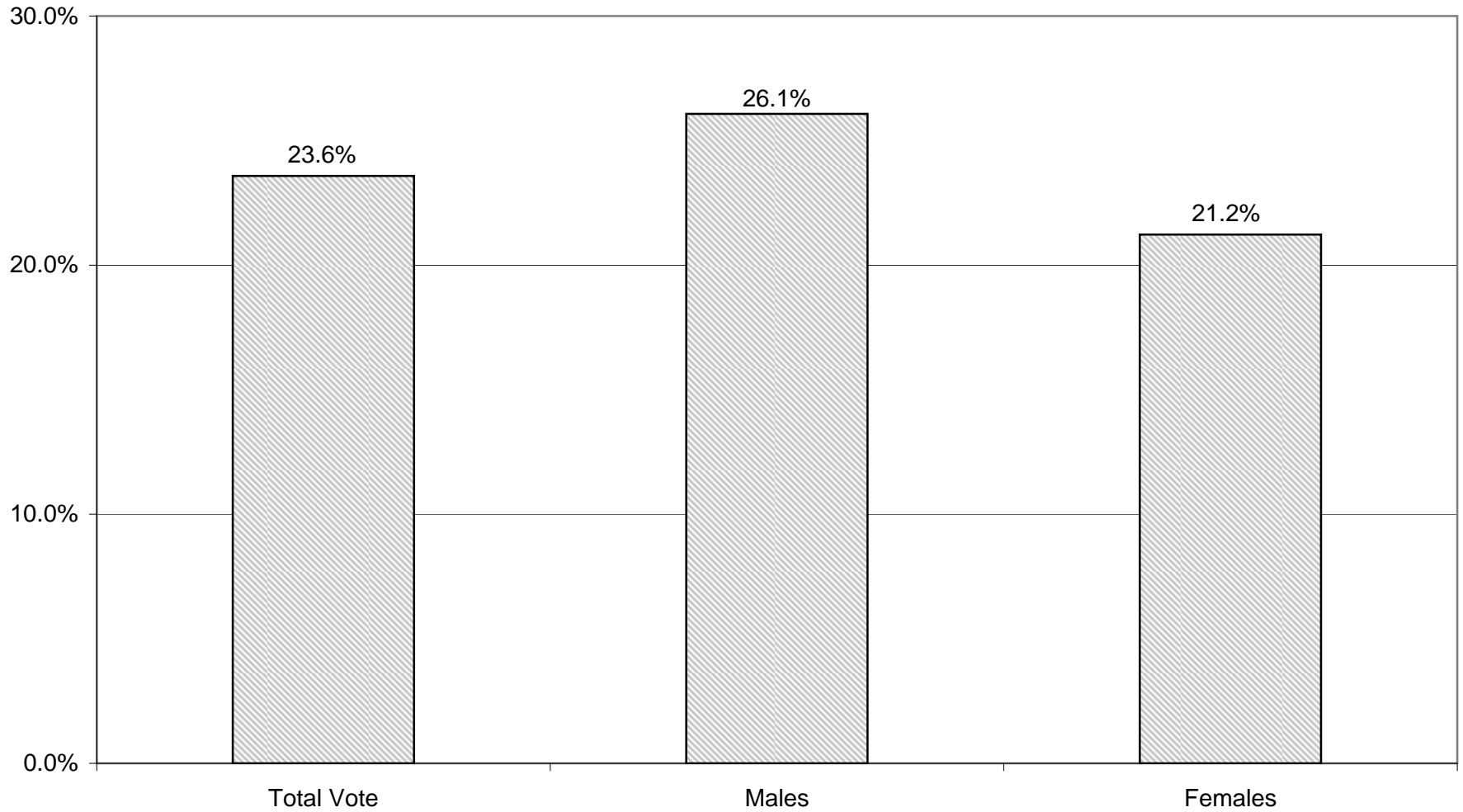
LEGISLATIVE DISTRICT OR TOWN CITY	NDOB			18-24			25-34			35-44		
	VOTED	REGISTERED	TURNOUT	VOTED	REGISTERED	TURNOUT	VOTED	REGISTERED	TURNOUT	VOTED	REGISTERED	TURNOUT
Leg. Dist. 06	0	4	0.00 %	2	49	4.08 %	8	164	4.88 %	23	126	18.25 %
Leg. Dist. 07	0	0	0.00 %	2	41	4.88 %	1	61	1.64 %	6	65	9.23 %
Leg. Dist. 21	5	6	83.33 %	7	302	2.32 %	41	670	6.12 %	53	529	10.02 %
Leg. Dist. 22	0	5	0.00 %	3	242	1.24 %	2	345	0.58 %	7	309	2.27 %
Leg. Dist. 23	11	13	84.62 %	8	267	3.00 %	60	905	6.63 %	78	548	14.23 %
Leg. Dist. 24	3	4	75.00 %	5	130	3.85 %	47	498	9.44 %	50	264	18.94 %
Leg. Dist. 25	1	3	33.33 %	8	331	2.42 %	20	431	4.64 %	23	287	8.01 %
Leg. Dist. 26	2	4	50.00 %	3	167	1.80 %	10	356	2.81 %	20	287	6.97 %
Leg. Dist. 27	6	10	60.00 %	9	294	3.06 %	21	458	4.59 %	30	364	8.24 %
Leg. Dist. 28	2	7	28.57 %	4	304	1.32 %	10	451	2.22 %	13	341	3.81 %
Leg. Dist. 29	1	9	11.11 %	6	304	1.97 %	11	464	2.37 %	18	355	5.07 %
TOTAL:	31	65	47.69 %	57	2,431	2.34 %	231	4,803	4.81 %	321	3,475	9.24 %
TOWNS												
Brighton	18	30	60.00 %	36	491	7.33 %	73	894	8.17 %	115	771	14.92 %
Chili	8	19	42.11 %	22	539	4.08 %	63	867	7.27 %	130	764	17.02 %
Clarkson	0	0	0.00 %	8	95	8.42 %	16	136	11.76 %	39	190	20.53 %
East Rochester	6	9	66.67 %	11	127	8.66 %	31	220	14.09 %	31	153	20.26 %
Gates	2	6	33.33 %	39	439	8.88 %	56	813	6.89 %	96	702	13.68 %
Greece	36	61	59.02 %	111	1,643	6.76 %	235	2,747	8.55 %	403	2,391	16.85 %
Hamlin	0	0	0.00 %	3	156	1.92 %	14	197	7.11 %	36	220	16.36 %
Henrietta	6	10	60.00 %	19	572	3.32 %	72	939	7.67 %	126	902	13.97 %
Irondequoit	38	61	62.30 %	59	850	6.94 %	141	1,514	9.31 %	281	1,371	20.50 %
Mendon	4	4	100.00 %	9	179	5.03 %	10	149	6.71 %	49	238	20.59 %
Ogden	3	12	25.00 %	7	348	2.01 %	21	470	4.47 %	38	549	6.92 %
Parma	2	4	50.00 %	22	384	5.73 %	47	428	10.98 %	96	464	20.69 %
Penfield	14	31	45.16 %	36	619	5.82 %	75	876	8.56 %	238	1,073	22.18 %
Perinton	3	12	25.00 %	25	974	2.57 %	72	1,069	6.74 %	185	1,331	13.90 %
Pittsford	5	11	45.45 %	13	499	2.61 %	30	504	5.95 %	115	730	15.75 %
Riga	0	1	0.00 %	12	116	10.34 %	13	136	9.56 %	37	167	22.16 %
Rush	0	1	0.00 %	1	58	1.72 %	4	70	5.71 %	14	83	16.87 %
Sweden	0	0	0.00 %	4	218	1.83 %	23	250	9.20 %	54	235	22.98 %
Webster	20	41	48.78 %	38	694	5.48 %	57	964	5.91 %	190	1,278	14.87 %
Wheatland	0	1	0.00 %	2	100	2.00 %	6	138	4.35 %	25	108	23.15 %
TOTAL:	165	314	52.55 %	477	9,101	5.24 %	1,059	13,381	7.91 %	2,298	13,720	16.75 %
GRAND TOTAL:	196	379	51.72 %	534	11,532	4.63 %	1,290	18,184	7.09 %	2,619	17,195	15.23 %

2009 GENERAL ELECTION
BLANK TURNOUT BY AGE

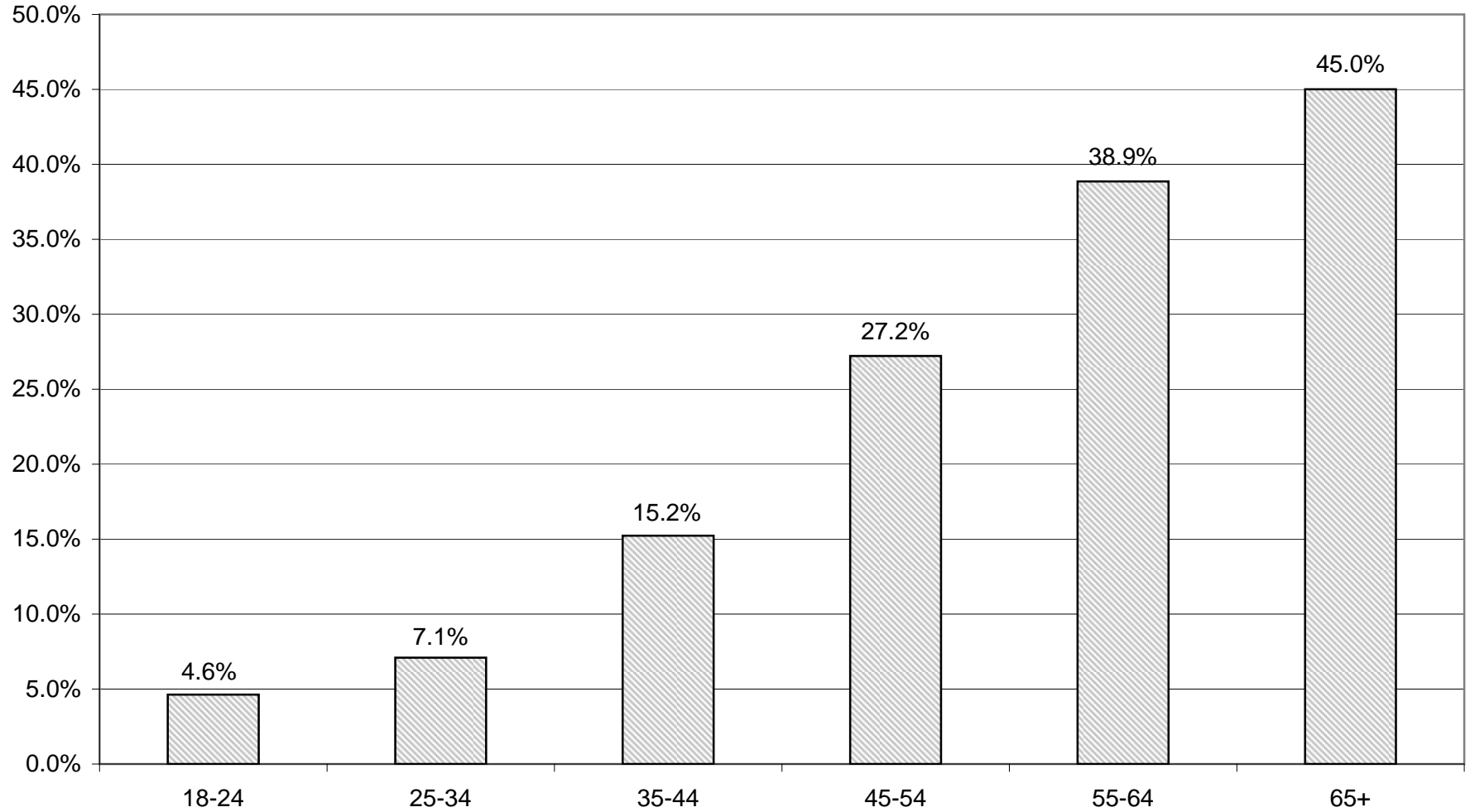
LT/LD SUMMARY
Part 2 of 2

LEGISLATIVE DISTRICT OR TOWN CITY	45-54			55-64			65+		
	VOTED	REGISTERED	TURNOUT	VOTED	REGISTERED	TURNOUT	VOTED	REGISTERED	TURNOUT
Leg. Dist. 06	38	158	24.05 %	55	151	36.42 %	38	92	41.30 %
Leg. Dist. 07	23	69	33.33 %	34	81	41.98 %	29	47	61.70 %
Leg. Dist. 21	72	441	16.33 %	96	354	27.12 %	66	221	29.86 %
Leg. Dist. 22	7	239	2.93 %	19	158	12.03 %	5	91	5.49 %
Leg. Dist. 23	126	443	28.44 %	157	430	36.51 %	122	265	46.04 %
Leg. Dist. 24	76	277	27.44 %	81	245	33.06 %	75	209	35.89 %
Leg. Dist. 25	28	227	12.33 %	52	203	25.62 %	47	139	33.81 %
Leg. Dist. 26	63	275	22.91 %	53	204	25.98 %	30	119	25.21 %
Leg. Dist. 27	47	304	15.46 %	81	266	30.45 %	41	154	26.62 %
Leg. Dist. 28	41	346	11.85 %	54	248	21.77 %	38	141	26.95 %
Leg. Dist. 29	33	360	9.17 %	49	273	17.95 %	44	189	23.28 %
TOTAL:	554	3,139	17.65 %	731	2,613	27.98 %	535	1,667	32.09 %
TOWNS									
Brighton	244	1,002	24.35 %	360	967	37.23 %	382	933	40.94 %
Chili	271	1,003	27.02 %	352	855	41.17 %	244	486	50.21 %
Clarkson	90	222	40.54 %	52	134	38.81 %	32	71	45.07 %
East Rochester	70	195	35.90 %	73	160	45.63 %	63	121	52.07 %
Gates	255	910	28.02 %	240	652	36.81 %	312	625	49.92 %
Greece	1,057	3,314	31.89 %	1,341	3,013	44.51 %	992	1,941	51.11 %
Hamlin	70	301	23.26 %	95	250	38.00 %	32	87	36.78 %
Henrietta	256	1,092	23.44 %	338	893	37.85 %	306	640	47.81 %
Irondequoit	605	1,721	35.15 %	779	1,680	46.37 %	674	1,328	50.75 %
Mendon	155	399	38.85 %	151	292	51.71 %	87	167	52.10 %
Ogden	143	798	17.92 %	146	603	24.21 %	104	320	32.50 %
Parma	253	686	36.88 %	244	486	50.21 %	146	288	50.69 %
Penfield	471	1,427	33.01 %	596	1,336	44.61 %	456	956	47.70 %
Perinton	423	1,794	23.58 %	635	1,738	36.54 %	561	1,267	44.28 %
Pittsford	239	1,089	21.95 %	280	919	30.47 %	350	864	40.51 %
Riga	78	230	33.91 %	84	174	48.28 %	61	98	62.24 %
Rush	59	181	32.60 %	64	152	42.11 %	47	84	55.95 %
Sweden	102	347	29.39 %	149	304	49.01 %	73	154	47.40 %
Webster	501	1,807	27.73 %	555	1,482	37.45 %	478	1,077	44.38 %
Wheatland	48	182	26.37 %	64	156	41.03 %	30	78	38.46 %
TOTAL:	5,390	18,700	28.82 %	6,598	16,246	40.61 %	5,430	11,585	46.87 %
GRAND TOTAL:	5,944	21,839	27.22 %	7,329	18,859	38.86 %	5,965	13,252	45.01 %

BLANKS TURNOUT - TOTAL AND GENDER 2009 GENERAL ELECTION

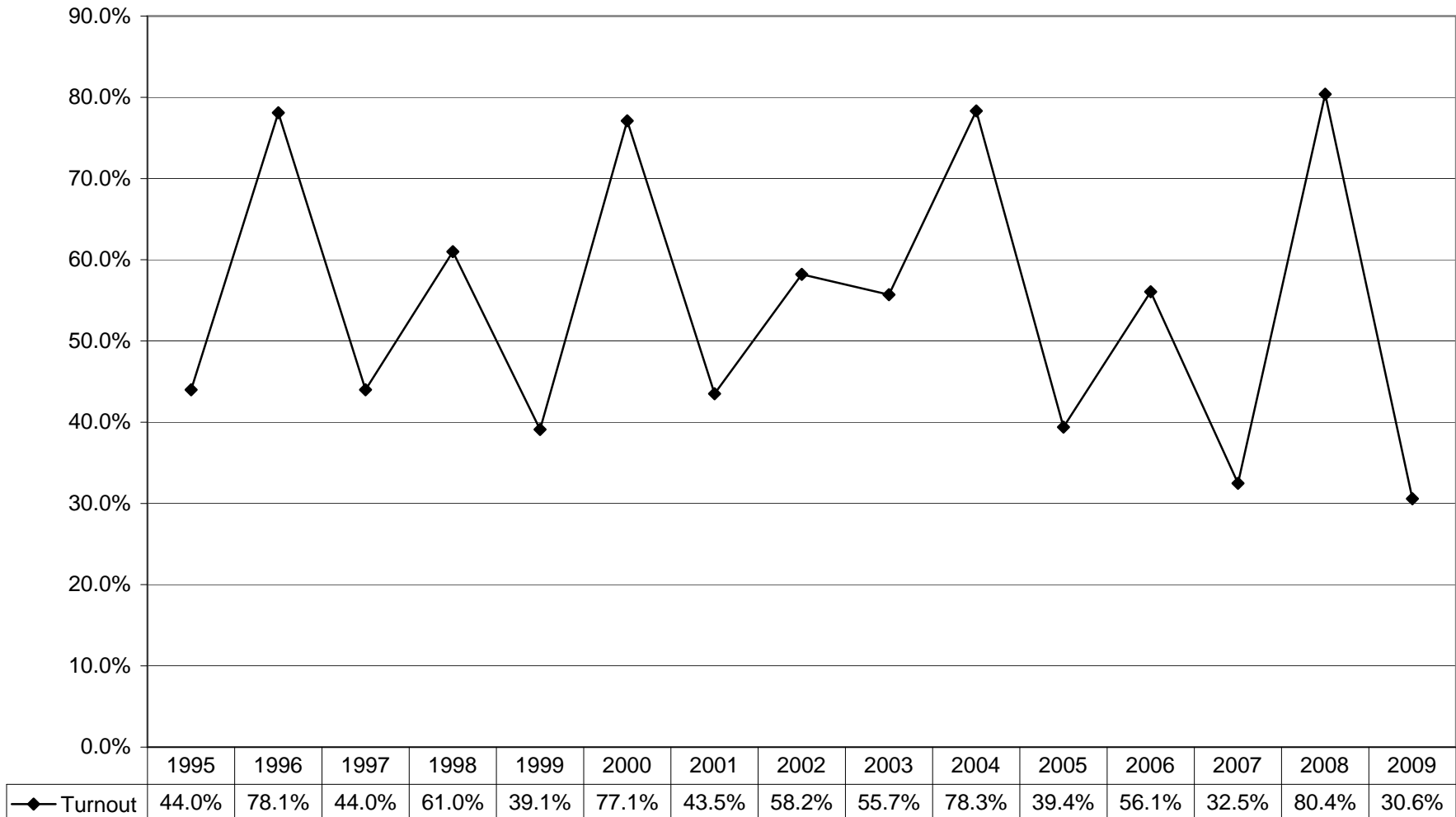


BLANKS TURNOUT BY AGE GROUP 2009 GENERAL ELECTION



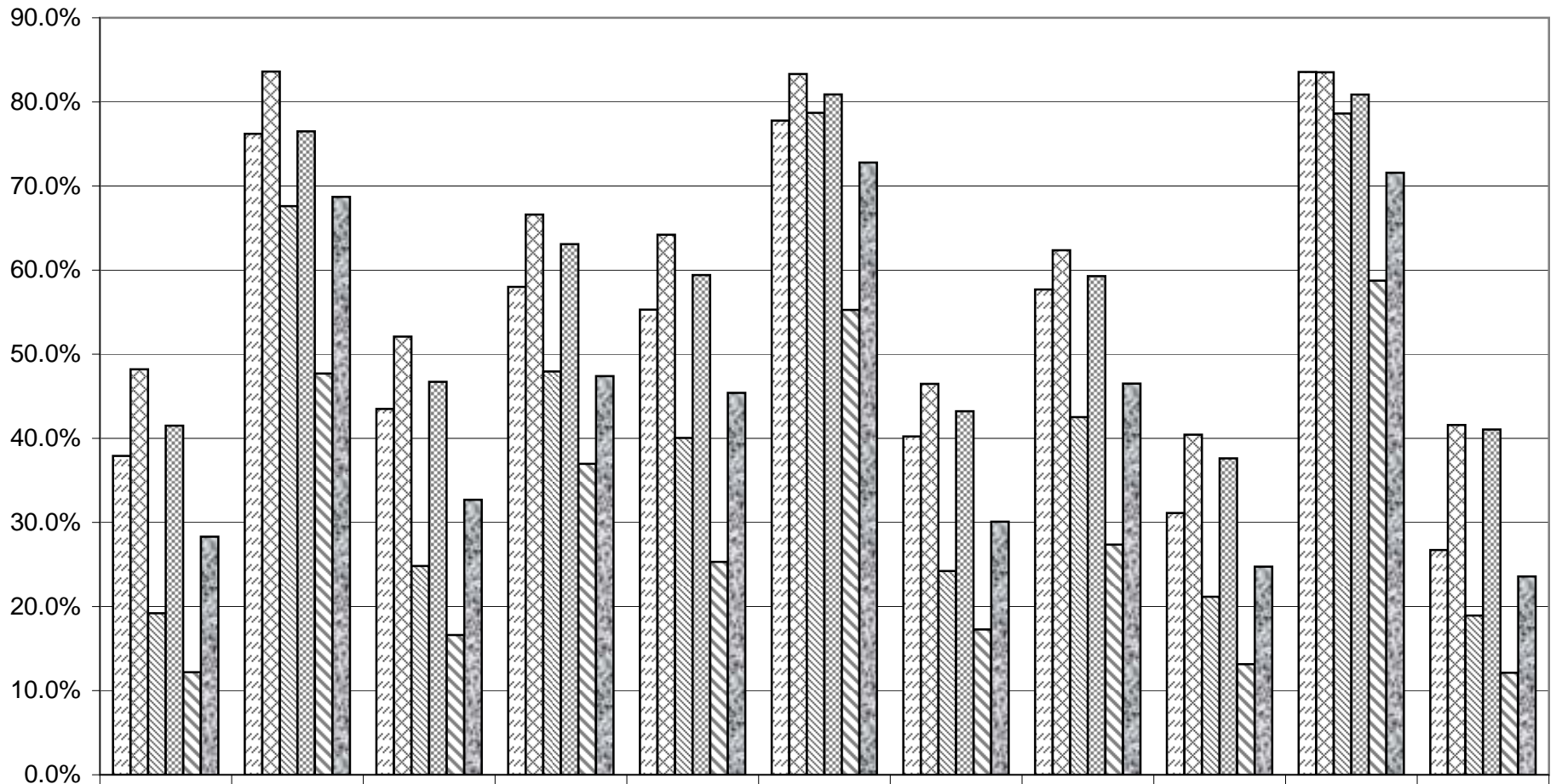
HISTORIC DATA

VOTER TURNOUT FOR THE GENERAL ELECTION 1995 Through 2009



VOTER TURNOUT BY PARTY

1999 Through 2009 General Elections



	1999	2000	2001	2002	2003	2004	2005	2006	2007	2008	2009
Democrats	37.9%	76.2%	43.5%	58.0%	55.3%	77.8%	40.2%	57.7%	31.1%	83.6%	26.7%
Republicans	48.2%	83.6%	52.1%	66.6%	64.2%	83.3%	46.5%	62.4%	40.4%	83.5%	41.6%
Independence	19.2%	67.6%	24.8%	47.9%	40.0%	78.7%	24.2%	42.5%	21.2%	78.6%	18.9%
Conservative	41.5%	76.5%	46.7%	63.1%	59.4%	80.9%	43.2%	59.3%	37.6%	80.9%	41.1%
Working Families	12.2%	47.7%	16.6%	37.0%	25.3%	55.3%	17.3%	27.4%	13.2%	58.8%	12.1%
Blanks	28.3%	68.7%	32.7%	47.4%	45.4%	72.8%	30.1%	46.5%	24.7%	71.6%	23.6%